

MODEL 62001/62002

High Speed Letter Opener

Parts List & Diagram

ITEM	QTY.	PART NO.	DESCRIPTION	ITEM	QTY.	PART NO.	DESCRIPTION
1	1	W-A62000001	Housing Assy	57	4	M-S61000039	Rubber Bumper
2	1	W-O62000007	Upright Frame, Right	58	1	W-O62000251	Idler Brkt
3	1	W-O62000006	Upright Frame, Left	59	1	W-O62000254	Interlock Switch Brkt
4	1	W-O62000011	Horizontal Frame	60	1	M-S033067	Micro Switch
5	1	W-O62000012	Vertical Frame	61	5	M-O62000179	Cable Clip
6	3	M-O62000048	Nylon Roller	62	4	M-S035036	Motor Grommet
7	3	M-S006006	Stripper Bolt 1/4 x 1	63	2	W-O62000250	Motor Mnt Brkt
8	2	M-S008012	1/4 X 3/4 X 1/16 Flat	64	1	W-O62000017	Support Tie Bar
9	2	M-S62000046	Pulley Shoulder Screw	65	1	W-O62000016	Motor Mount
10	1	W-A62000705	Double Pulley Assy	66	1	W-O62000255	Chad Diverter
11	1	W-A62000036	Eccentric Pulley Assy	67	1	M-S013053	1/2 x 5/8 x 1 Bushing
12	1	W-O620071	Small Blade	68	1	M-O095204	Bushing Retainer
13	2	M-S62000073	3-8x16 L.H. Hex Nut	69	1	M-S61000003	Snap Bushing
14	1	M-O62000077	Shaft Spacer	70	1	M-S021064	110V Motor 1501X AC
15	1	W-O62000310	Main Drive Shaft	71	1	M-S037094	10 Bld 4" Fan Lh
16	1	W-O62000063	Shaft Spring	72	1	M-S045225	15 Mfd Motor Capacitor
17	1	W-O022021	Cutter Shaft Pulley	73	1	M-S045231	Fuse Holder
18	1	W-O62000086	Knife Back-Up Disc	74	1	M-S63601106	Fuse 5 Amp 110v
19	1	W-O620087	Large Blade	75	1	W-A62000121	Front Cover Assy
20	1	W-A62000021	Single Pulley Assy	76	1	W-A62000156	Front Panel
21	1	M-O62000081	Ejector Wheel	77	1	M-S033053	On/Off Rocker Switch
22	2	M-O62000082	Ejector Wheel Rubber	78	1	W-O62000311	Guide Brkt
23	1	M-S010003	5100-50 Ext. Retaining Ring	79	2	M-S62000151	Feed Belt
24	1	M-S008022	Wave Washer .50 X .75	80	1	M-O62000072	Small Shaft
25	1	W-O62000064	Lower Knife Guard	81	1	M-S022125	24 Tooth XI Pulley
26	1	W-A62000096	Rear Deck Assy	82	1	M-S025057	204 Tooth XI Belt
27	1	W-O62000206	Front Deck	83	2	M-S62000117	Ski Arm Spring
28	2	W-O62000102	Ski Arm	84	1	M-S62000163	Operating Instr Label
29	1	W-O62000131	Upper Knife Guard	85	1	M-S62000164	Dial Cut Decal
30	1	W-O62000126	Scrap Chute	86	1	M-S037020	115V USA Line Cord
31	1	W-A62000137	Hold Back Assy	87	1	M-S035015	Strain Relief SR-5P-4
32	1	M-S62000136	Hold Back Wheel	88	4	M-S62000009	Rubber Foot
33	2	M-S001053	10-32 X 1/2 Ph Pan Hd	89	4	M-S008005	3/16 Flat Washer
34	1	W-O62000101	Ski	90	1	M-S015091	Martin Yale Label
35	1	W-O62000106	Pressure Plate	91	1	M-O62000109	Pressure Plate Spring
36	4	M-S62000104	Ski Pivot Retainer	92	1	W-A62000221	Catcher Assy
37	2	M-O62000103	Ski Pivot	93	1	W-A62000226	Scrap Bin
38	1	W-A62000141	Stop Plate Assy, Feed	94	5	M-S001104	6-32 X 3/8 Phil. Fl. Hd.
39	1	M-O62000196	Transport Wheel	95	1	M-S62000053	Shaft Bushing
40	2	M-S001003	6-32 X 3/16 Phil Pan Head	96	1	W-O62000162	Plate Deflector
41	1	W-A62000015	Front Deck Mount Brkt	97	1	M-O62000061	Adjustment Shaft
42	1	M-S63751547	Control Knob	98	4	M-S62000052	Shaft Bearing
43	1	W-A62000186	Rear Panel Assy	99	1	M-S031075	Comp. Spring .31D x .88
44	2	M-S63751118	1/4-20 X 2 SHCS	Replacement parts for Model 62002 220V same except for:			
45	2	WRA62000730	#10 X 1" Black Thumb Screw	70	1	M-S021065	CV7 AC Motor 220V
46	1	M-S63751510	1/4-20 X 2 1/4 Shcs	72	1	M-S045249	6mf Motor Cap
47	1	WRA62000732	#10 X 1.5" Black Thumb Screw	86	1	M-S037286	European Cord Set
48	3	M-S61000058	10-32 Hex Nut	*Replacement parts for the Model 62002 220V machine may vary in appearance from the parts illustrated in the diagram			
49	1	M-S007010	10-32 Acorn Nut				
50	1	WRA62000731	#6 X 1" Gray Thumb Screw				
51	1	M-S007003	6-32 Pl. Hexnut				
52	1	W-A62000203	Anchor Brkt Assy				
53	1	M-S62000199	10-24 X 3/4 Shoulder Bolt				
54	3	M-S62000105	Bolt Retainer				
55	1	M-S61000023	Flat Washer #10				
56	1	W-A62000709	Shaft Housing Assy				

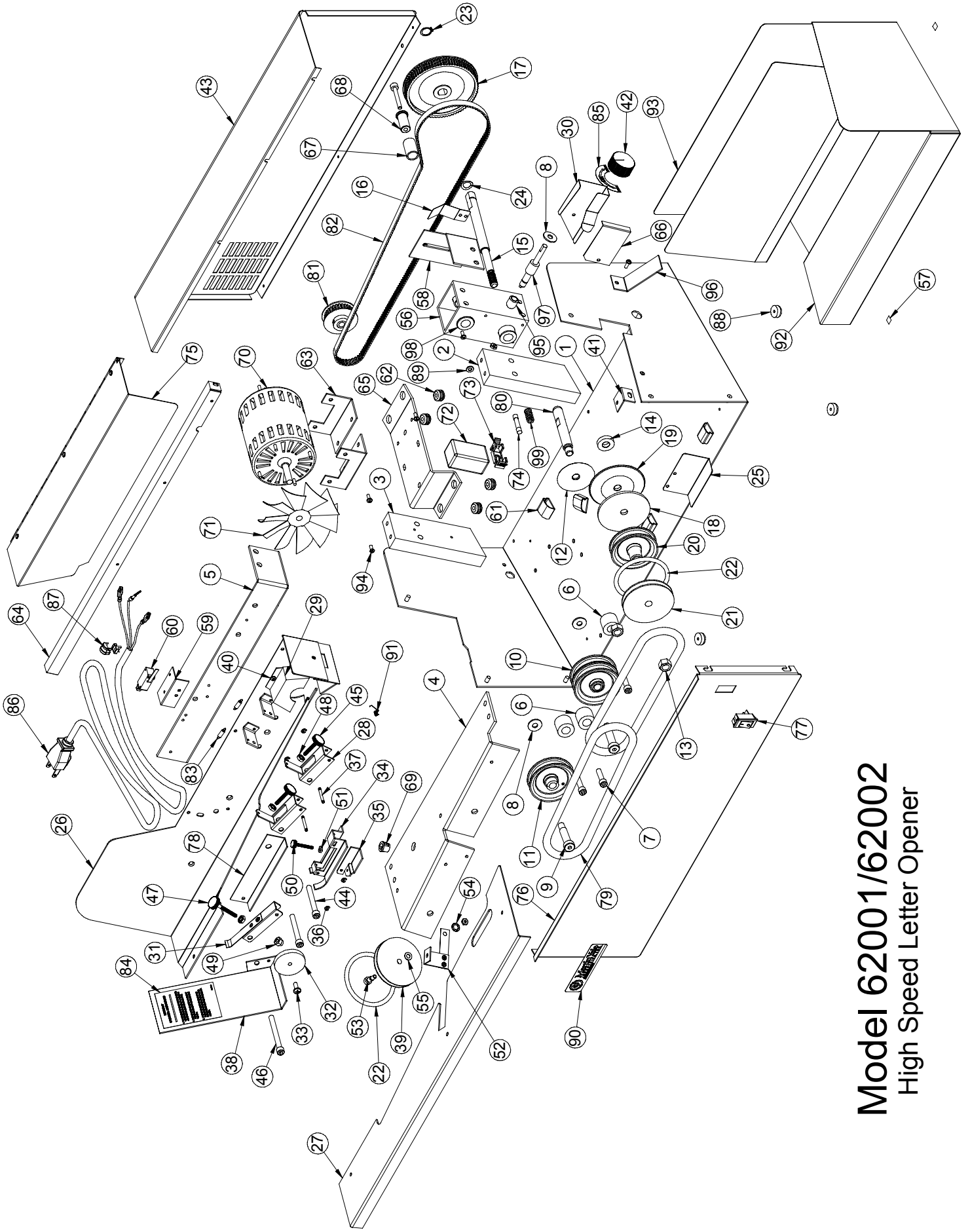


MARTIN YALE
Industries

251 Wedcor Avenue • Wabash, IN 46992

Phone: 260/563-0641 • FAX: 260/563-4575

website: www.martinyale.com • email: info@martinyale.com



Model 62001/62002
High Speed Letter Opener