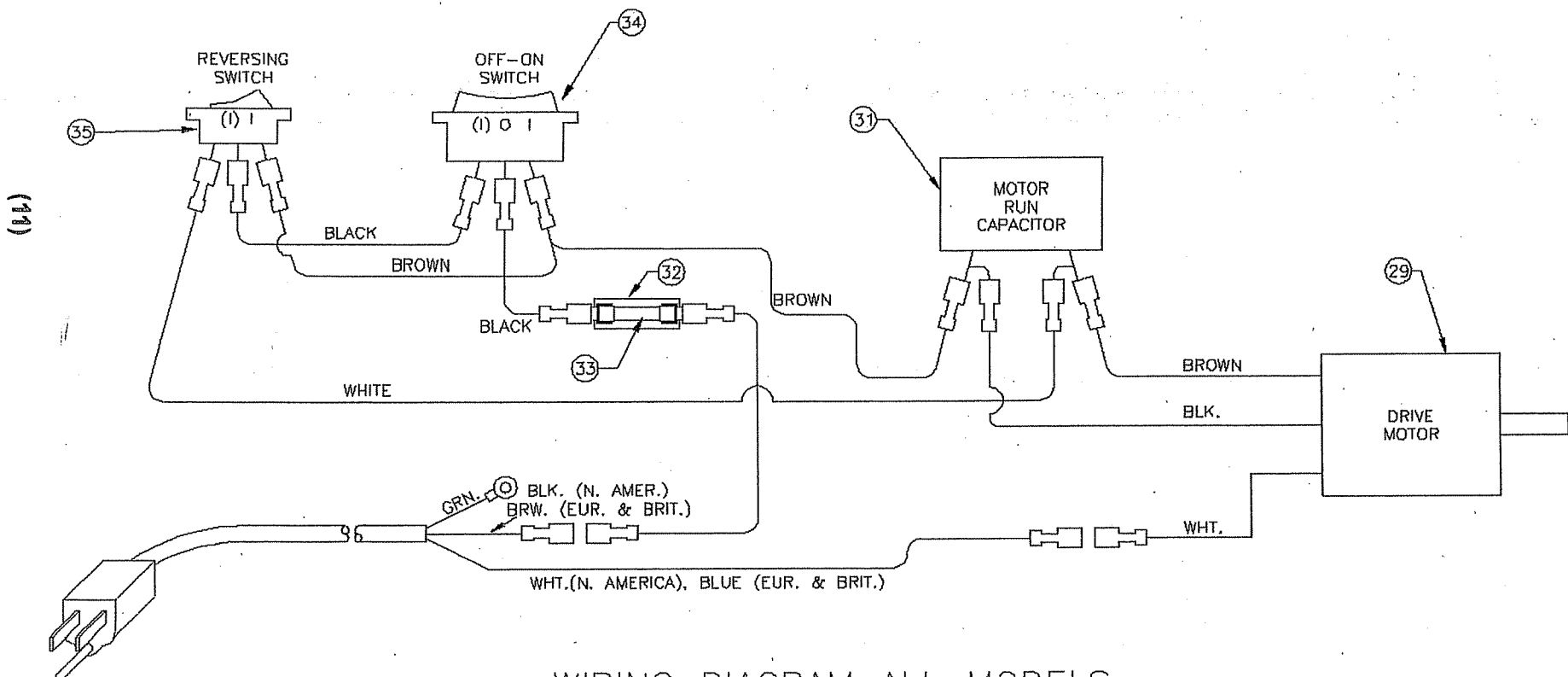


ProSource Packaging, Inc.
 14911 Stuebner Airline Suite A
 Houston, TX 77069
 800-203-0233
 www.Machine-Solution.com

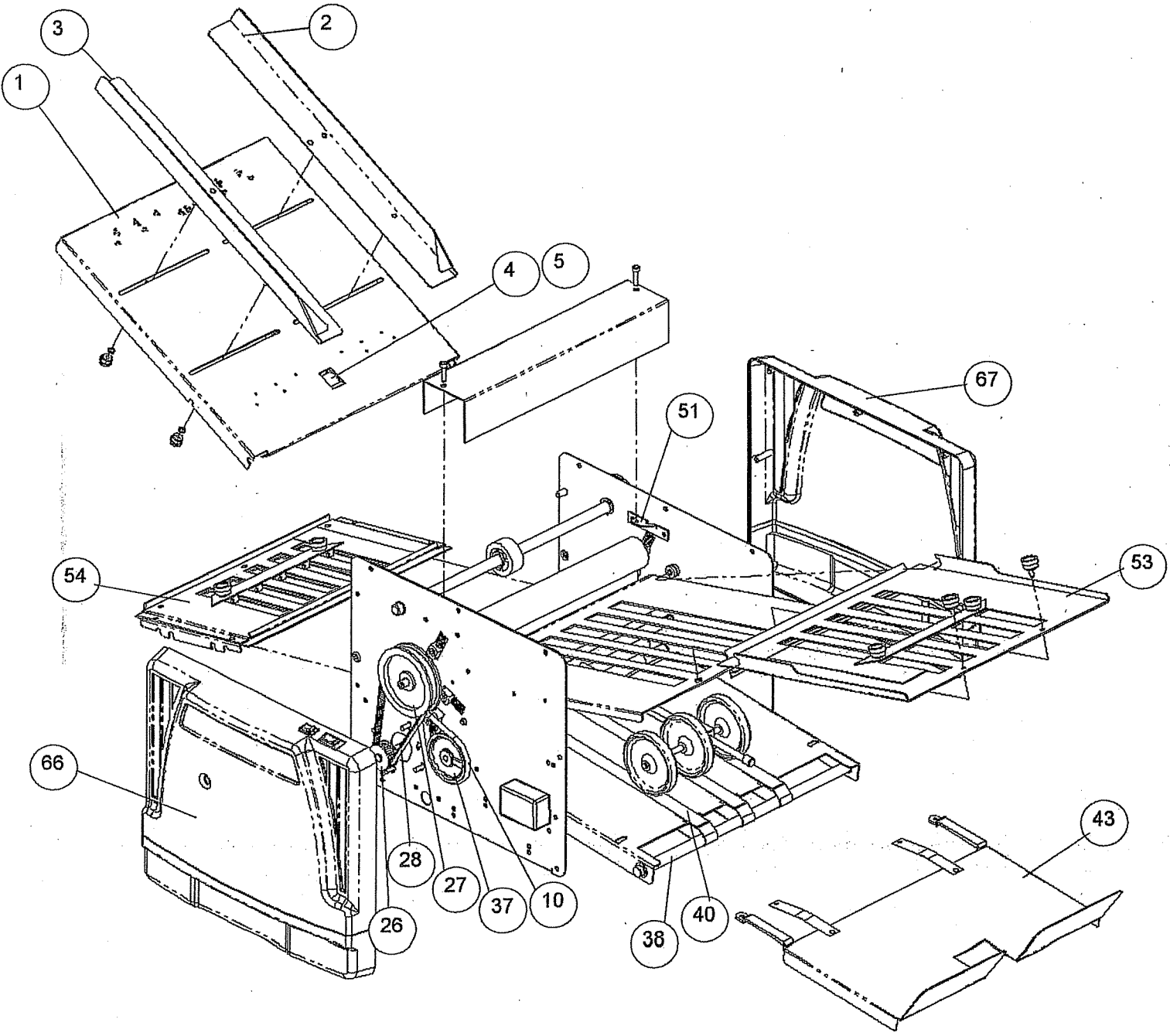
| PART LIST | | | |
|-----------|-------------|---------------------------|------|
| REF. | PART No. | DESCRIPTION | QTY. |
| | M-S037020 | POWER CORD (110 V.A.C.) | 1 |
| | M-S037286 | EUROPEAN CORD | 1 |
| | M-S045177 | BRITISH CORD | 1 |
| 29 | M-S021067 | 110 V. MOT. (N. AMERICAN) | 1 |
| | M-S021068 | 230 V. MOT. (EUR. & BRIT) | 1 |
| 31 | M-S045101 | CAP. 20MF. (N. AMERICAN) | 1 |
| | M-S045102 | CAP. .8MF. (EUR. & BRIT.) | 1 |
| 32 | M-S045018 | FUSE HOLDER | 1 |
| 33 | M-S63601106 | 5A FUSE | 1 |
| 34 | M-S033084 | SWITCH ON/OFF/MOM. | 1 |
| 35 | M-S033085 | REVERSING SWITCH | 1 |



WIRING DIAGRAM ALL MODELS

1217A Wiring Diagram

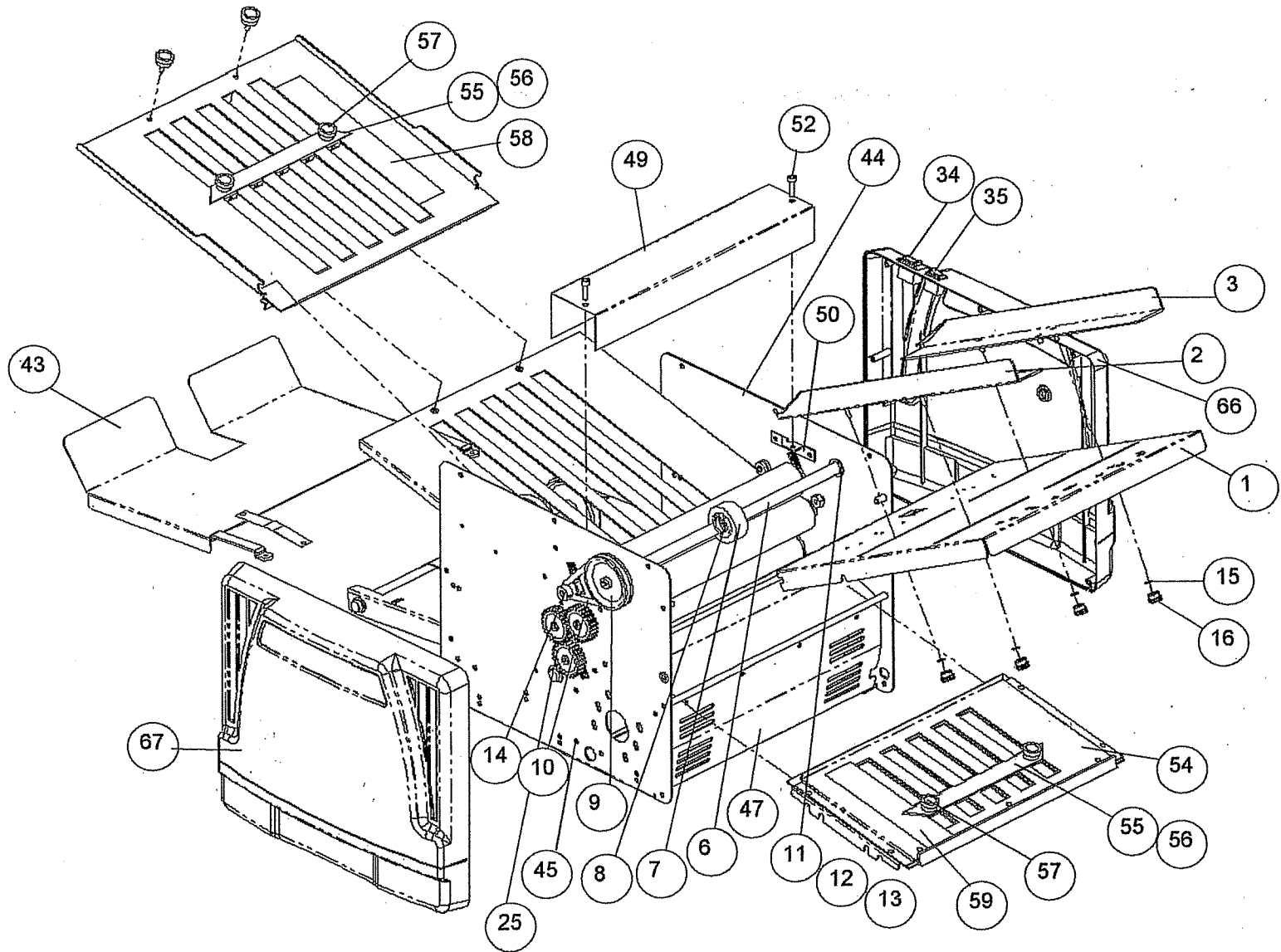
1217A Parts Diagram



(12)

Right Rear
Exploded View

1217A Parts Diagram



Left Front
Exploded View

1217A Parts List

| Ref.# | Part # | Qty. | Description | Ref.# | Part # | Qty. | Description |
|-------|-------------|------|-------------------------------|--------------|-----------|------|--------------------------------|
| 1 | W-A121768 | 1 | Feed Table Assembly | Ref. Diag. | M-S037020 | 1 | Line Cord, 110 Volt |
| 2 | W-A121756 | 1 | Paper Guide Assy., L.S. | Wiring Diag. | M-S037286 | 1 | Line Cord, 220 Volt |
| 3 | W-J121755 | 1 | Paper Guide Assy., R.S. | Wiring Diag. | M-S045177 | 1 | U.K. Line Cord, 3A |
| 4 | WRA003116 | 1 | Retarder Roller Assembly | Not Shown | M-S035018 | 1 | Hexco |
| 5 | M-S007018 | 1 | Retarder Adjusting Knob | W-O121714 | W-O121714 | 1 | Conveyor Drive Shaft |
| 6 | W-O121744 | 1 | Feed Roller Shaft | W-S022013 | W-S022013 | 1 | Conveyor Shaft Pulley |
| 7 | W-A121745 | 1 | Feed Wheel Assembly | W-O121752 | W-O121752 | 1 | Conveyor Idler Shaft |
| 8 | M-O121746 | 1 | Clutch Spring | M-S014030 | M-S014030 | 2 | Igilde Clip Bearing, 1/2" Dia. |
| 9 | M-O001591 | 1 | Feed Roller Pulley | M-S023053 | M-S023053 | 3 | Conveyor Belts |
| 10 | M-S023001 | 2 | O'Ring Drive Belt | W-A121718 | W-A121718 | 1 | Stacking Wheel Assembly |
| 11 | M-S014027 | 4 | Bearing, Nylon (Nyliner) | W-O121763 | W-O121763 | 1 | Conveyor Table |
| 12 | M-S008046 | 2 | Nylon Flat Washer | W-A121702 | W-A121702 | 1 | Exit/Stacking Table |
| 13 | M-S010006 | 5 | External "E" Ring (1/2" Dia.) | W-O121753 | W-O121753 | 1 | Right Side Frame |
| 14 | M-O121742 | 1 | Feed Drive Pulley | W-O121754 | W-O121754 | 1 | Left Side Frame |
| 15 | M-S008045 | 4 | #10 x 5/16 Fiber Washer | W-O121750 | W-O121750 | 1 | Chute |
| 16 | M-S032008 | 4 | 8-32 Thumbknob | W-O121751 | W-O121751 | 1 | Vent Guard |
| 17 | W-A121743 | 1 | 1st. Fold Roller, Upper | W-O121757 | W-O121757 | 1 | Motor Support Bracket |
| 18 | W-A121771 | 1 | Main Drive Roller, Long Shaft | Not Shown | W-O121786 | 1 | Motor Guard |
| 19 | WRA121712 | 1 | Intermediate Fold Roller | W-O121788 | W-O121788 | 1 | Roller Cover |
| 20 | WRA121722 | 1 | Bottom Fold Roller | W-O095265 | W-O095265 | 1 | Roller Cover Bracket, R.S. |
| 21 | M-S013009 | 6 | Roller Bearing, Bronze | W-O095280 | W-O095280 | 1 | Roller Cover Bracket, L.S. |
| 22 | M-S013010 | 2 | Roller Bearing, Bronze | M-S003082 | M-S003082 | 2 | Roller Cover Screw |
| 23 | M-S031035 | 4 | Roller Spring, Blue | W-A121764 | W-A121764 | 1 | 1st. Fold Table Assembly |
| 24 | M-S031059 | 2 | Roller Barrel Spring | W-A121767 | W-A121767 | 1 | 2nd Fold Table Assembly |
| 25 | M-O003033 | 3 | Nylon Gear 24T | W-O001534 | W-O001534 | 2 | Paper Stop/Indicator Bar |
| 26 | M-S022136 | 1 | Motor Pulley, | W-O001507 | W-O001507 | 2 | Paper Stop Clamp Bar |
| 27 | M-S022137 | 1 | Capstan Pulley, 80T | M-S032007 | M-S032007 | 6 | Thumbknob (Paper Stop) |
| 28 | M-S025056 | 1 | Timing Belt, 137T | M-O001566 | M-O001566 | 2 | Ruler Label, 1st. Fold Table |
| 29 | M-S021067 | 1 | 110V AC Motor | M-O001568 | M-O001568 | 2 | Ruler Label, 2nd Fold Table |
| 30 | M-S037096 | 1 | 220V AC Motor | M-S030051 | M-S030051 | 2 | Grommet |
| 31 | M-S045101 | 1 | 4 1/2" FanBlade | M-S001117 | M-S001117 | 2 | 8-32 x 5/8" Screw |
| 32 | M-S045102 | 1 | Capacitor for 110V, 20uf | M-S007006 | M-S007006 | 2 | 8-32 Keps Nut |
| 33 | M-S045016 | 1 | Capacitor for 220V, 8uf | M-O003104 | M-O003104 | 3 | Index Pin, Round |
| 34 | M-S63601106 | 1 | Fuse Holder | M-O095242 | M-O095242 | 1 | Index Pin, Hex |
| 35 | M-S033064 | 1 | Fuse for 110V/220V, 5 AMP | M-O121729 | M-O121729 | 2 | Tie Rod |
| | M-S033065 | 1 | Switch On/Off/Momentary | M-O121758 | M-O121758 | 1 | Right Side Cover - |
| | | 1 | Switch, Reversing | M-O121759 | M-O121759 | 1 | Left Side Cover |

