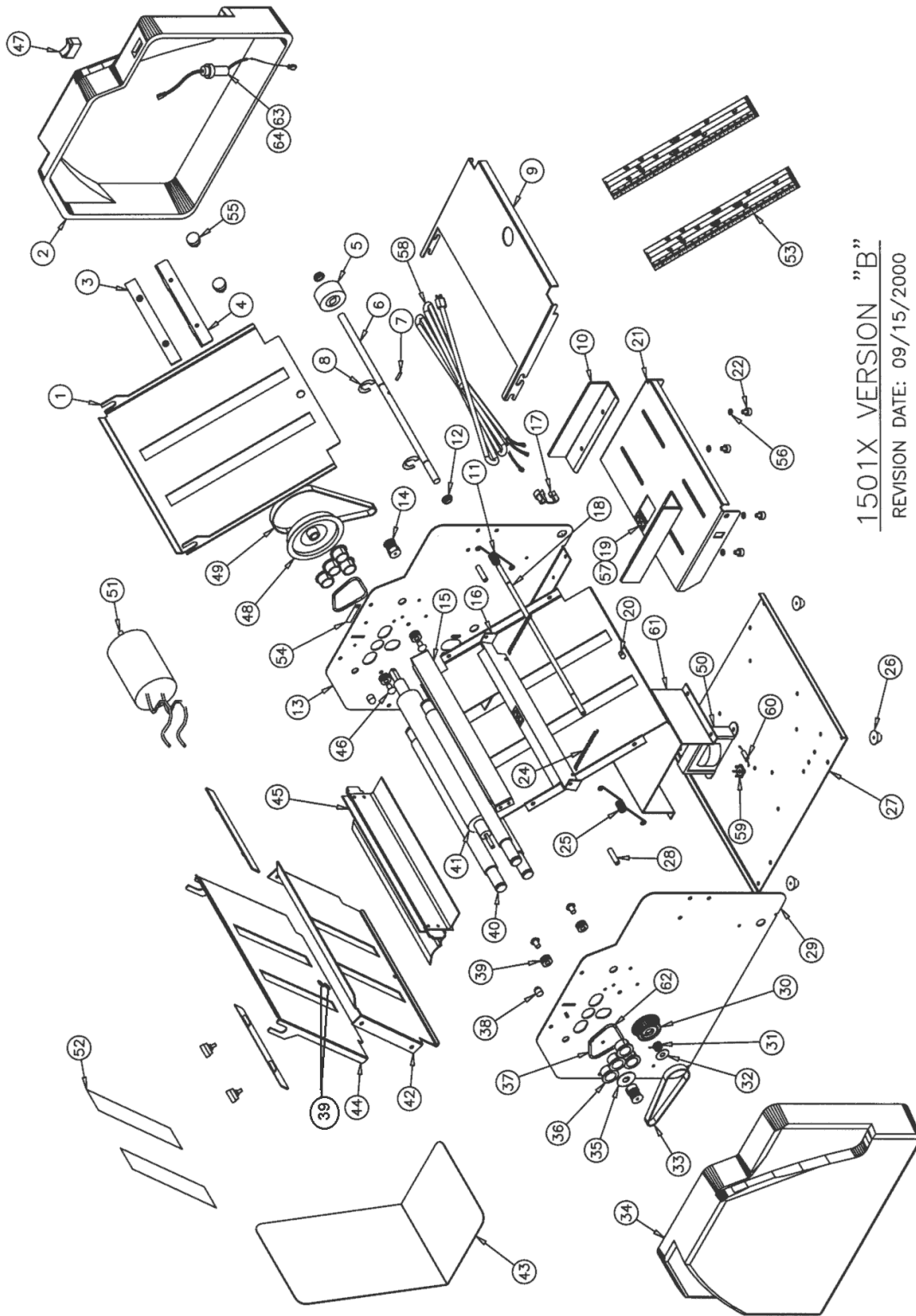


# 1501X Parts List

## Serial Number 9000 and up

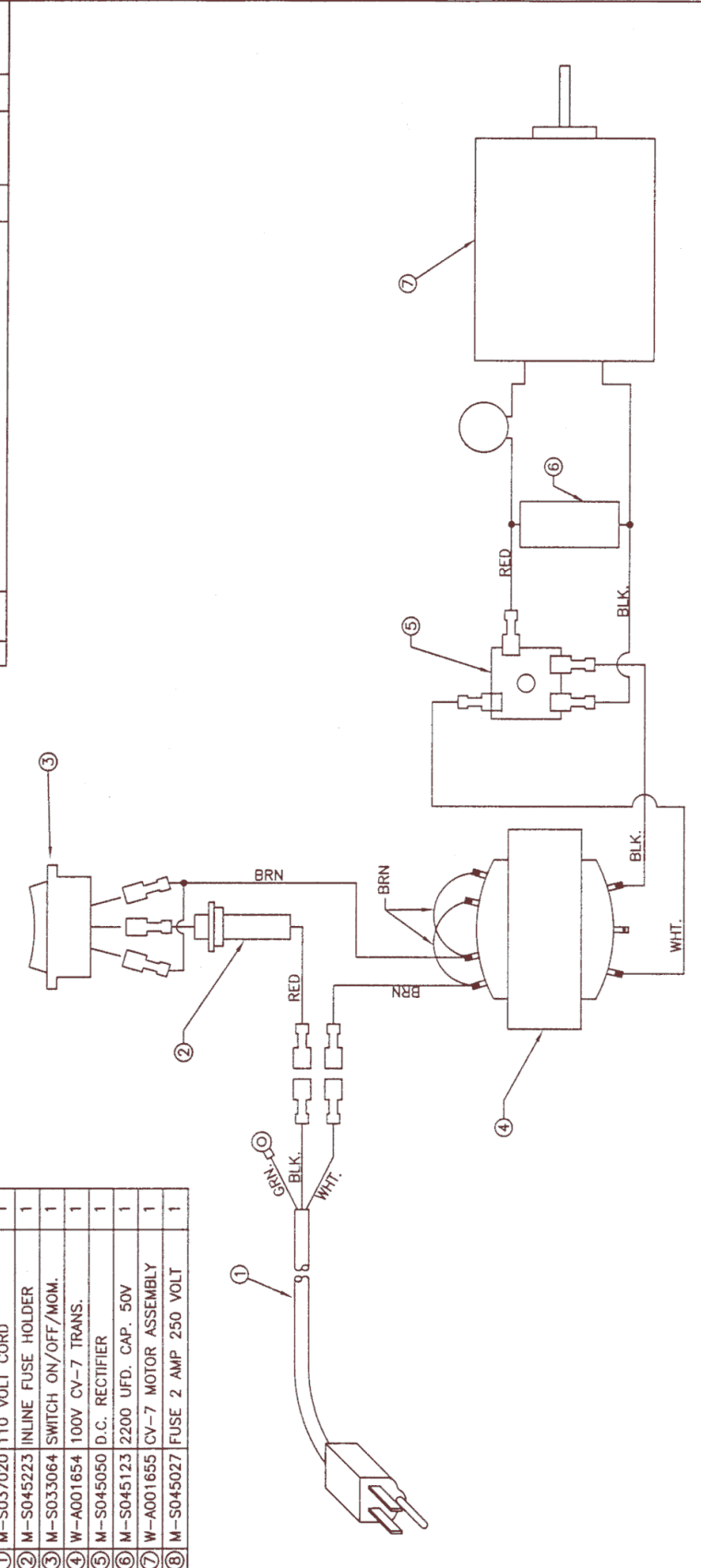
<u>Fig.</u>	<u>Part Number</u>	<u>Description</u>	<u>Qty.</u>
1	W-O001602	1 <sup>st</sup> Fold Table Top	1
2	M-O001638	Non Operator Side Cover	1
3	W-O001616	Paper Stop Locking Bar	2
4	W-O001615	Paper Stop	2
5	M-O001649	CV7 Feed Roller	1
6	W-O001617	Feed Roller Shaft	1
7	M-S018064	1/8 X 5/8 Dowel Pin	1
8	M-S010011	3/8 External "E" Ring	2
9	W-O001606	Extension Table	1
10	M-O001630	Paper Guide	2
11	M-O001636	Right Torsion Spring	1
12	M-S014029	3/8 ID Clip Bearing	2
13	W-I001608	Right Side Frame	1
14	M-S022129	3MM 12T X 5MM ID Pulley	2
15	W-O001613	Feed Deflector	1
16	W-O001614	Separator Frame	1
17	M-S035023	Strain Relief 5N-4	1
18	W-O001618	Tie Rod	1
19	M-O001647	Plastic Friction Pad	2
20	M-S019032	¼ X 3/8 X .17 ID Spacer	6
21	W-I001605	Feed Table	1
22	M-S005017	Paper Guide Thumbscrew	4
23	W-O001601	1 <sup>st</sup> Fold Table Bottom	1
24	M-S031095	Extension Spring .19 X 1 X .016	2
25	M-O001635	Left Torsion Spring	1
26	M-S030045	Rubber Foot	4
27	W-O001612	Base Plate	1
28	M-S019033	8-32 X .25 X 1 Standoff	2
29	W-I001607	Left Side Frame	1
30	M-O001624	36T Feed Pulley	1
31	M-S031033	Clutch Spring	1
32	M-S008044	.38 X 1.5 X .06 Flat Washer	1
33	M-S025047	80T 3MM HTD Belt	1
34	M-O001637	Operator Side Cover	1
35	M-S008040	#10 X 1 Fender Washer	1
36	M-O001625	Capstan Bearing	8
37	M-O001665	Short Roller Spring	2

<u>Fig.</u>	<u>Part Number</u>	<u>Description</u>	<u>Qty</u>
38	M-S030052	½ Diameter Rubber Bumper	2
39	M-S030051	Grommet .25 ID X .44 OD	7
40	W-O001619	Pressure Roller	3
41	W-A001620	Capstan Roller	1
42	W-O001603	2 <sup>nd</sup> Fold Table Bottom	1
43	W-O001611	Exit Tray	1
44	W-O001604	2 <sup>nd</sup> Fold Table Top	1
45	W-A001622	Upper Guide Assembly	1
46	M-S011117	8-32x5/8Truss Head	4
47	M-S033064	On/Off/ Momentary Switch	1
48	M-O001633	Capstan Drive Pulley	1
49	M-S025041	130T 3MM HTD Belt	1
50	W-A001654	110V CV7 Trans. Assembly	1
50	W-A001653	220V CV7 Trans. Assembly	1
51	W-A001655	CV7 Motor Assembly	1
52	M-O001643	2 <sup>nd</sup> Fold Table Ruler	2
53	M-O001642	1 <sup>st</sup> Fold Table Ruler	2
54	W-O001641	Guide Load Spring	1
55	M-S032007	Fold Table Thumb Knob	4
56	M-S008045	#10 X 5/16 Fiber Washer	4
57	W-O001663	Friction Pad Spring	1
58	M-S037020	115V USA Line Cord	1
58	M-S037286	European Cord 10 Amp	1
58	M-S045177	British Line Cord 3 Amp	1
59	M-S045050	D. C. Rectifier	1
60	M-S045123	2200 MFD 50V Capacitor	1
61	W-O001667	Transformer Cover	1
62	M-O001666	Long Roller Spring	2
63	M-S045223	In – Line Fuse Holder	1
64	M-S045027	2 Amp Fuse 3 AG	1



1501X VERSION "B"  
REVISION DATE: 09/15/2000

PART LIST		REVISIONS		CHG. BY	CHANGE DATE	APPROV.	APPROVED DATE
FIG.	PART No.	DESCRIPTION	QTY.				
1	M-5037020	110 VOLT CORD	1				
2	M-5045223	INLINE FUSE HOLDER	1				
3	M-5033064	SWITCH ON/OFF/MOM.	1				
4	W-A001654	100V CV-7 TRANS.	1				
5	M-5045050	D.C. RECTIFIER	1				
6	M-5045123	2200 UFD. CAP. 50V	1				
7	W-A001655	CV-7 MOTOR ASSEMBLY	1				
8	M-5045027	FUSE 2 AMP 250 VOLT	1				



DRAWING SCALE: 100%

**Martin Yale**  
INDUSTRIES, INC.

251 WEDCOB AVE.  
WABASH, IN 46092  
PHONE (219) 563-0827  
FAX (219) 563-2833

CV-7 WIRING  
DIAGRAM

PRODUCT USED ON	W-A	SIZE	XX
P-M	FINAL	LOCATION	XX
P-M1501X0		REV. No.	1
QUANTITY REQUIRED PER MACHINE	1	DATE	ARK 10/11/00
MATERIAL	SEE PARTS LIST	DESCRIPTION	
FINISH		TECHNICALS (unless otherwise noted)	
		.XX = ± .010	
		.XXX = ± .005	
		∠ = ± 1°	

5. NO NICKS, SCRATCHES, TOOL MARKS, OR OTHER SURFACE DEFECTS ALLOWED.  
 4. PART IS TO BE FREE OF BURRS AND SHARP EDGES.  
 3. COMMERCIAL TOLERANCES AND QUALITY AND FINISHES.  
 2. DIMENSIONS IN INCHES (AND INCLUDE PLAYING IF USED).  
 1. DO NOT SCALE DRAWING. NOTES (AS SPECIFIED)

6. SOLDER JOINTS MUST BE FREE OF FLUX AND VOIDS.

NOTES (continued)