

SPECIFICATIONS

Type of Shredding:	Strip Cut	Rating:	Continuous Duty
Shred Size:	0.228" (5.8mm)	Electrical Service Requirements:	115 Volts 1 phases 60 cycles 20 amps
Cutting Capacity:	40-45 sheets 8-1/2" x 11" 20 lb. bond (70 g/m ²)	Dimensions and Weight:	Width: 24.449" (621mm) Depth: 15.551" (395mm) Height: 10.079" (256mm) Weight: 178 lbs. (80 kg)
Working Width:	16.023" (407mm)		
Motor:	1.5 H.P. 115 Volts 60 cycles 1 phase 15 amps		

FEATURES

- Completely Assembled
- Key Operated Reverse/Off/Forward Control Knob
- High Capacity Strip Cut
- Solid Steel Cutting Cylinders
- Built-In Document Feed Shelf
- Quiet Operation
- Chain Drive
- Multiple Safety Features
 - Approved by Underwriters Laboratory, Inc. ®
 - Rear Safety Flap
 - Thermal Motor Protection
 - Micro-Switch Operated Top Safety Flap with Automatic Cut-Off

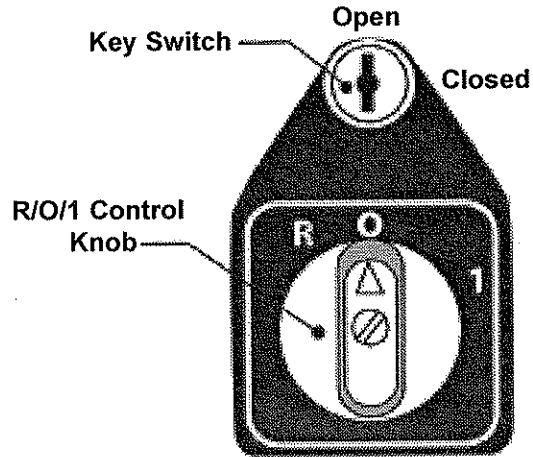
EXPLANATION OF CONTROLS

Control: R/O/1 Control Knob

Function: Selects Reverse (R), Off (O), or Forward (1) mode.

Control: Key

Function: Locks and unlocks the R/O/1 control knob for added security. The key may be left in the O (Off) position when the machine is not in use or may be assigned to one operator who is responsible for the machine.



OPERATING INSTRUCTIONS

STARTING THE MACHINE

1. Plug the unit into an outlet (**no less than 20 amps**) designed to receive a grounded plug.
2. Make sure the top safety flap is closed.
3. Prepare the paper for shredding. Remove jumbo paper clips from the paper to be shredded. Regular paper clips and staples will not damage the cutters of the machine.
4. Make sure the bag is in place to collect the shredded material.
5. Turn the key to the left.
6. Turn the R/O/1 control knob past the 1 (Forward) then release it (like a car ignition) to start the machine.

Note: For Reverse, hold R/O/1 control knob in the R (Reverse) position. When released, the control knob will automatically return to the O (Off) position and the machine will stop.

WARNING: Do not attempt to bend or cut the ground extension from the plug to force it into a regular outlet. If your facility does not have the correct type of outlet, contact a qualified electrician.

WARNING: Keep all loose articles of clothing, ties, jewelry, long hair, and other objects away from the shredder opening.

FEEDING PAPER

This machine is designed for continuous bulk shredding. For the best cutting results, do not exceed established capacities.

Feed paper directly into the funnel in stacks of 40-45 sheets of 8-1/2" x 11", 20 lb. bond or the equivalent.

If too much paper is fed into the machine at one time, the cutting blades stop automatically and then run in reverse momentarily to eject the jammed material. See Clearing Jams for further instructions.

STOPPING THE MACHINE

1. Turn the R/O/1 control knob on the O (Off) position.
2. Turn the key to the O (Off) position. Remove the key **ONLY** if you have been assigned the responsibility to do so.

NOTE: Empty the waste bag after stopping the machine. A bag that is too full can cause jamming and can slow the shredder, resulting in motor wear. Try to empty the bag **before** jamming can occur.

WARNING: Always turn off and unplug the machine before servicing, moving or any activity other than normal operation.

CLEARING JAMS

Jamming occurs when too much paper is fed into the shredder at once. Continuous jamming for an extended period of time causes overheating and wear on the motor.

If jamming occurs, the cutting blades will promptly stop and then run in reverse for a moment, ejecting the excessive material. After the material has been ejected, the cutting blades will stop automatically. The top safety flap will then open and the material can be removed.

If material is too tightly jammed together, turn the R/O/I control knob to the R (Reverse) position for a moment. The blades will run in Reverse and will release the material.

Restart the shredding procedure with fewer sheets of paper at one time.

CORRECTING THERMAL OVERLOAD

Under continuous jamming conditions, the motor may be overheat.

If the motor becomes overheated, an automatic thermal interrupter in the motor will stop the machine. When this occurs, do the following:

1. Turn the R/O/1 control knob to the O (Off) position.
2. Allow the machine to cool for at least 15 minutes.
3. Turn the R/O/1 control knob to the 1 (Forward) position and continue shredding.

CHECKLIST FOR INOPERATIVE MACHINE

- ❑ Make sure the unit is plugged in.
- ❑ Make sure the top safety flap is closed.
- ❑ Check the bag. If it is too full, empty it.
- ❑ Check for a jam in the shredder. Follow the instructions for clearing jams.
- ❑ Check the branch circuit breaker on the supply panel. If it has tripped, reset it.
- ❑ Turn off machine for 15 minutes, then restart. The motor may have overheated, automatically shutting off the machine. The 15-minute down time allows the motor to cool.

If you cannot identify the cause of the problem, contact your distributor. (See back page.)

MACHINE MAINTENANCE

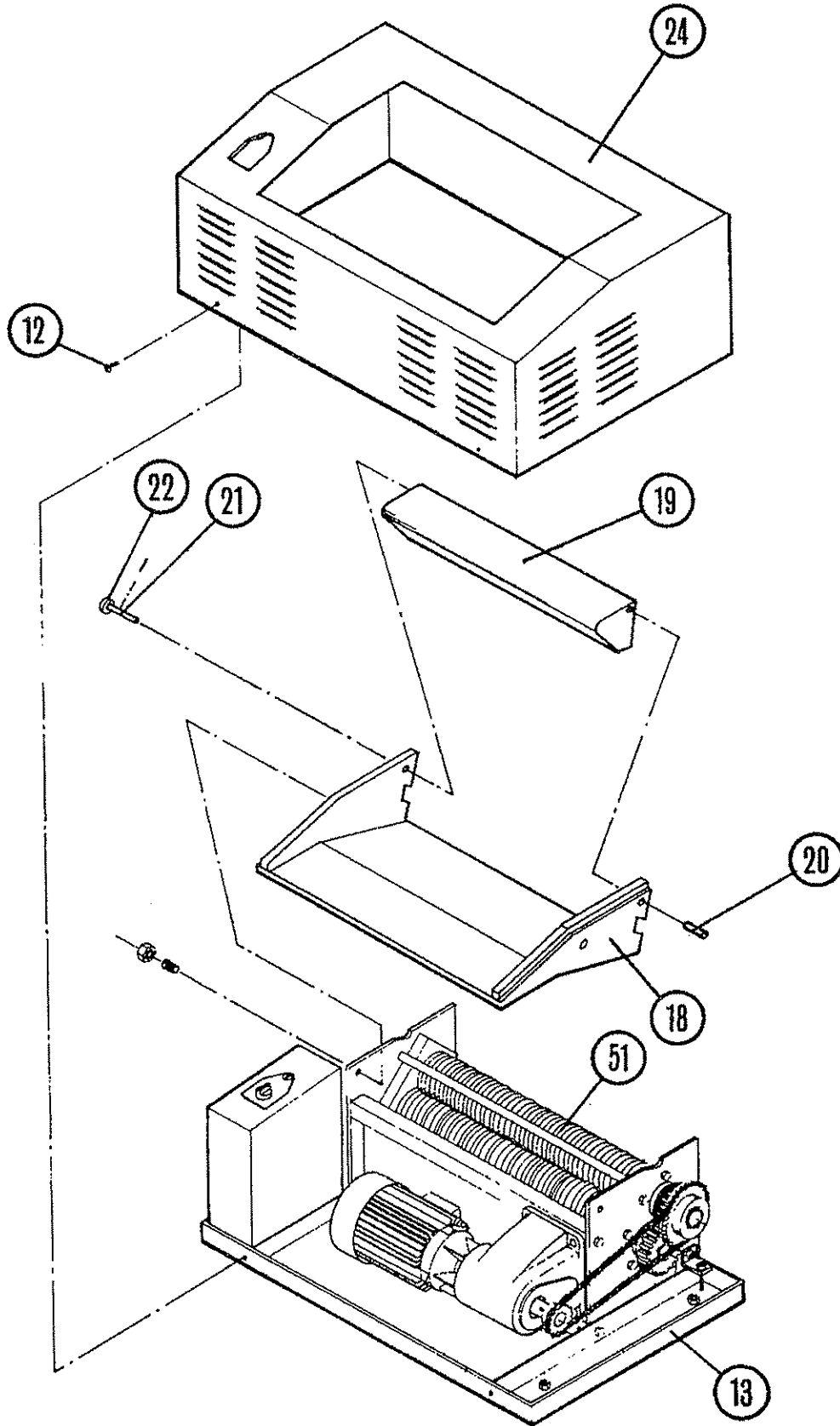
All maintenance activities must be performed by a qualified maintenance technician.

The frequency of the maintenance procedures depends upon machine usage and is best determined by the customer. With average machine use, follow the procedures below approximately every three months.

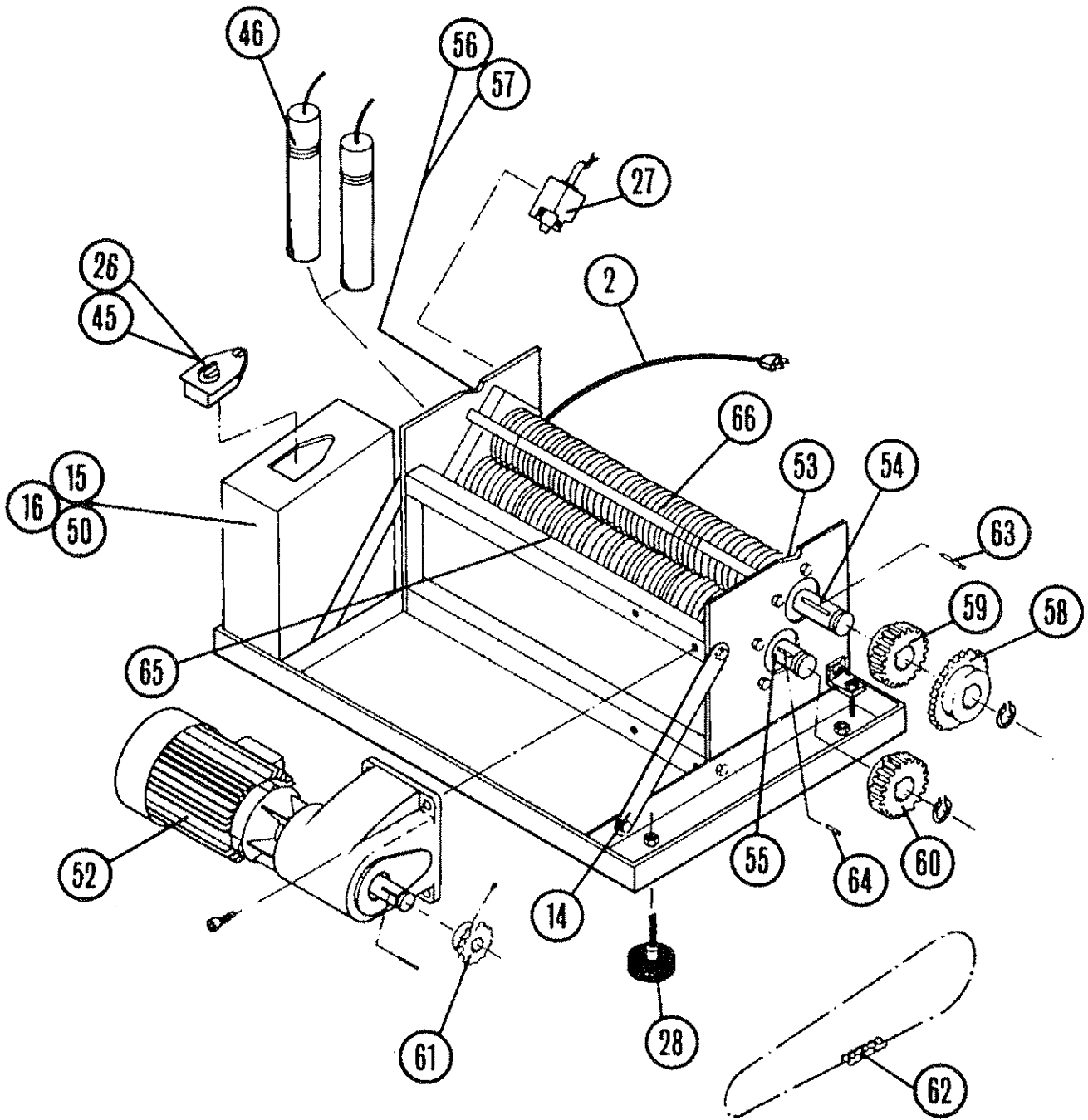
Unplug the machine and remove the housing top. Then:

1. Visually inspect parts for damage, including gears for tooth damage; replace as necessary.
2. Clean out accumulated dust and paper debris by vacuuming or using a clean cloth.
3. Coat the chain sprockets, gears and chains with light grease.
4. Adjust the chain to proper tension. *Note:* The chain should remain tight at all times.
5. Clean and inspect the cutting mechanism.

HOUSING ASSEMBLY DIAGRAM



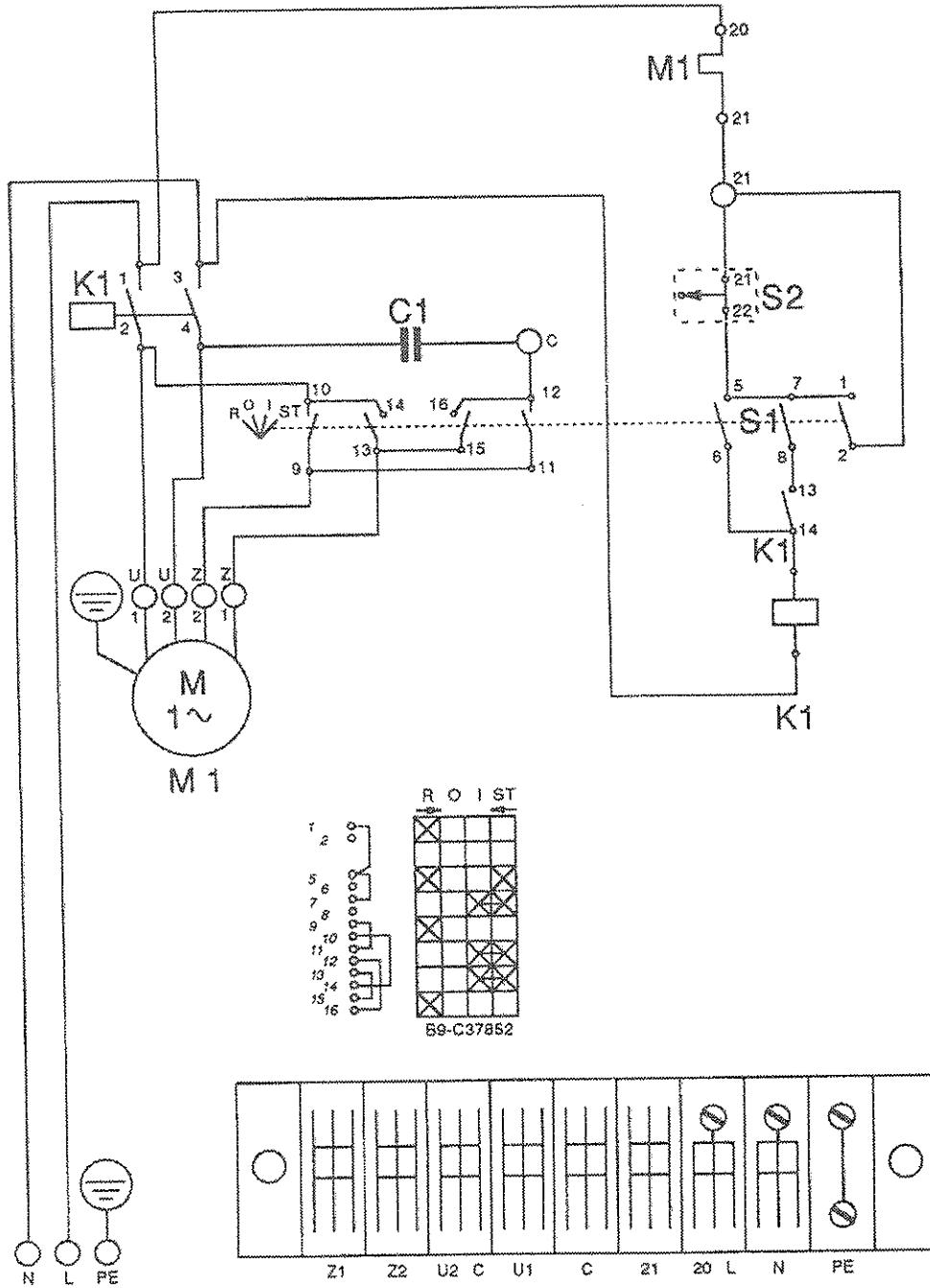
CUTTING BLOCK DIAGRAM



PARTS LIST

ITEM	PART NO.	QTY	DESCRIPTION	ITEM	PART NO.	QTY	DESCRIPTION
1	0038100	2	RIVOT S/N PLATES	34	9012705	5	DIN127 SPLIT LOCKWASHER B10
2	0040860	1	CORDSET 14/3 SJO	35	9043904	2	NUT HEX M12 DIN439
3	0040910	9	TERM FEM RB257 16-14	36	9091207	4	DIN912 SKT HD CAP SC M8X16
4	0042002	55	WIRE TEW 16 GAUGE RED	37	9091401	1	DIN914 SET SCREW M4X10
5	0042055	60	WIRE TEW 14 GAUGE BLACK	38	9093403	6	DIN934 HEX NUT M4
6	0042375	7	TYRAP PLT 1-M-M-98MM	39	9093406	4	DIN934 HEX NUT M8
7	0042590	8	TUBING SIZE 7/16 .438ID	40	9093407	6	DIN934 HEX NUT M10
8	0060000	1	S/N PLATE	41	9679702	7	DIN6797 INT TH WASHER J4.3
9	0090912	2	DIN912 M10X20 SC CP SCKT HD	42	9679707	2	DIN6797 INT TH WASHER J10.5
10	0093351	1	OWNERS MANUAL	43	9734601	2	DRIVE PIN 3X12
11	1110200	4	RUBBER EDGE STRIP	44	9797102	2	DIN7971 PAN HD SC M4.2X9
12	1410280	4	HOUSING SCREW LONG HD	45	9915620	1	KEY SW FWD/REV B9 C37852
13	2410450	1	HOUSING FRAME	46	9926140	2	CAPACITOR 30MF 240V
14	2410500	2	STABILIZER BAR	47	9927060	2	GROMMET DR10-14-18-2
15	2420800	1	CONTROL BOX	48	9927070	1	GROMMET DA150-220-10
16	2421090	1	R10 CONTACTOR	49	9927410	1	HEYCO BSHG STRAIGHT SR-7W-2
17	2423100	4	FLAT HEAD SCREW M4.5X11	50	9928670	1	TERMINAL BLOCK 9 POLE
18	2430050	1	INLET GUIDE	51	PB13253197	1	CUTTING BLOCK
19	2430060	1	INLET FLAP	52	2420080	1	MOTOR 1.1KW 115V/60 CYCLE ABM
20	2430070	1	PIVOT PIN SHORT	53	9996206	4	BEARING 620ZR
21	2430080	1	PIVOT PIN LONG	54	2410070	1	CUTTING CYLINDER LONG 5.8
22	2430090	1	TRIP CAM	55	2410050	1	CUTTING CYLINDER SHORT 5.8
23	2430100	2	PIN M12X20	56	2410200	1	ADJUSTING PLATE
24	2430150	1	HOUSING TOP	57	2410210	1	ADJUSTING BAR
25	2470010	1	DUST SHIELD	58	2410250	1	CHAIN WHEEL Z25
26	3023150	1	SWITCH LABEL	59	2410260	1	CLUTCH WHEEL Z42
27	4423210	1	LIMIT SWITCH	60	2410270	1	SYNCHRON GEAR Z42
28	8030280	4	RUBBER FOOT	61	2410380	1	CHAIN WHEEL Z14
29	9008409	2	DIN84 CH HD SCREW M4X12	62	2410370	1	CHAIN 59GL
30	9008410	1	DIN84 CH HD SCREW M4X16	63	9688511	1	KEY DIN6885 8X5X28 (LG CYLINDER)
31	9008415	2	DIN84 CH HD SCREW M4X22	64	9688509	1	KEY DIN6885 8X5X16 (SH CYLINDER)
32	9012501	2	WASHER FLAT 4.3MM DIN125	65	2410410	4	FRONT CAMS 5.8
33	9012704	4	DIN127 SPLIT LOCKWASHER B8	66	2410400	4	BACK CAMS 5.8

WIRING DIAGRAM



251 Wedcor Avenue

Wabash, Indiana 46992

Phone: (260) 563-0641 Fax: (260) 563-4575

Email: info@martinyale.com Website: www.martinyale.com

ProSource Packaging, Inc.

14911 Stuebner Airline Rd STE A Houston, TX 77069

(281) 453-8801 www.Machine-Solution.com