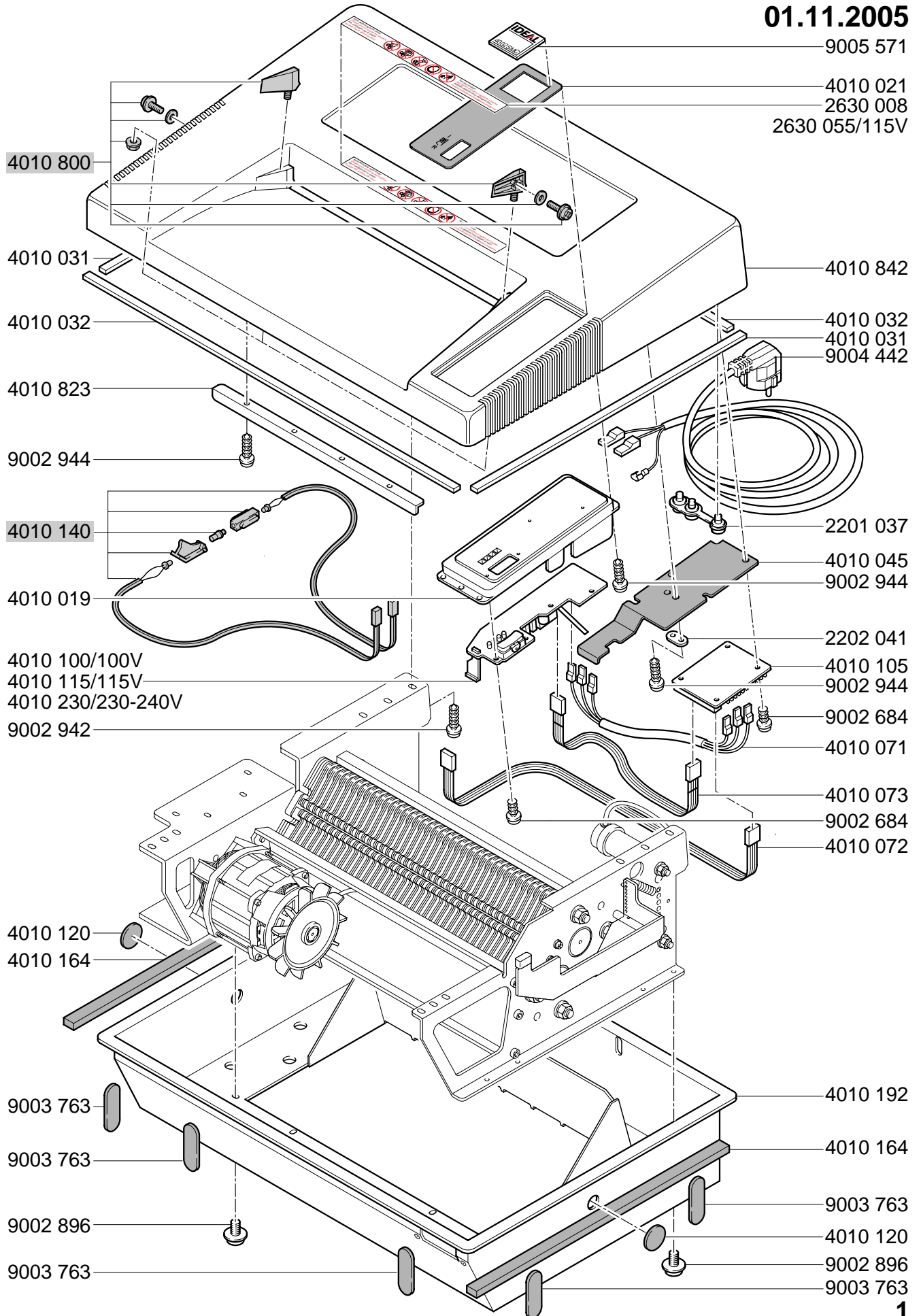


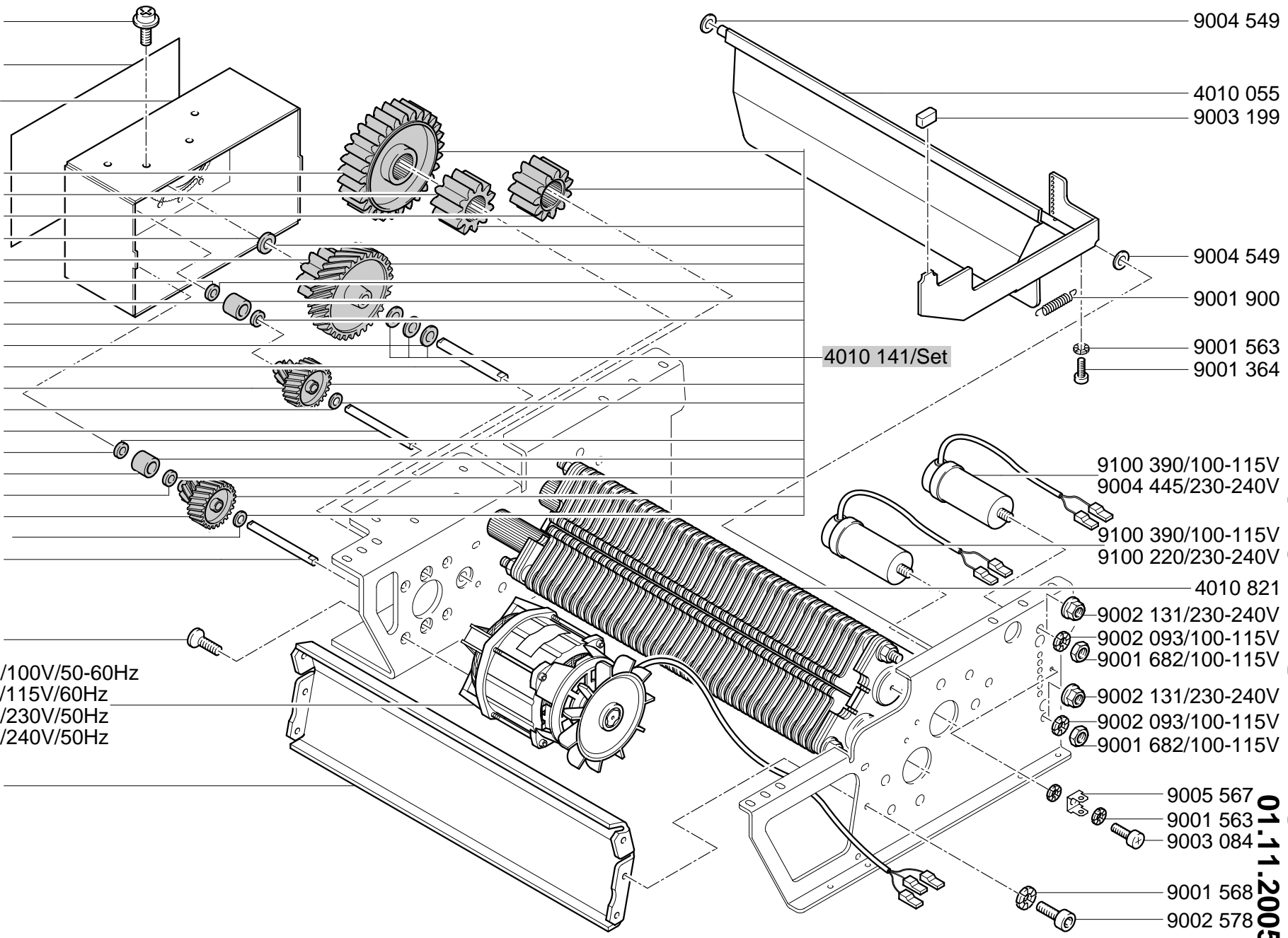
Mod.4002 SMC A

01.11.2005

9005 571



- 9002 896
- 4010 084
- 4010 007
- 4010 026
- 4010 027
- 4010 027
- 9004 550
- 4010 028
- 9004 549
- 4010 044
- 9004 549
- 9004 550
- 4010 005
- 4010 075
- 9004 557
- 4010 008
- 9004 549
- 4010 044
- 9004 549
- 4010 075
- 9004 557
- 4010 008
- 9004 466
- 9004 542/100V/50-60Hz
- 9004 543/115V/60Hz
- 9004 443/230V/50Hz
- 9004 541/240V/50Hz
- 4010 006

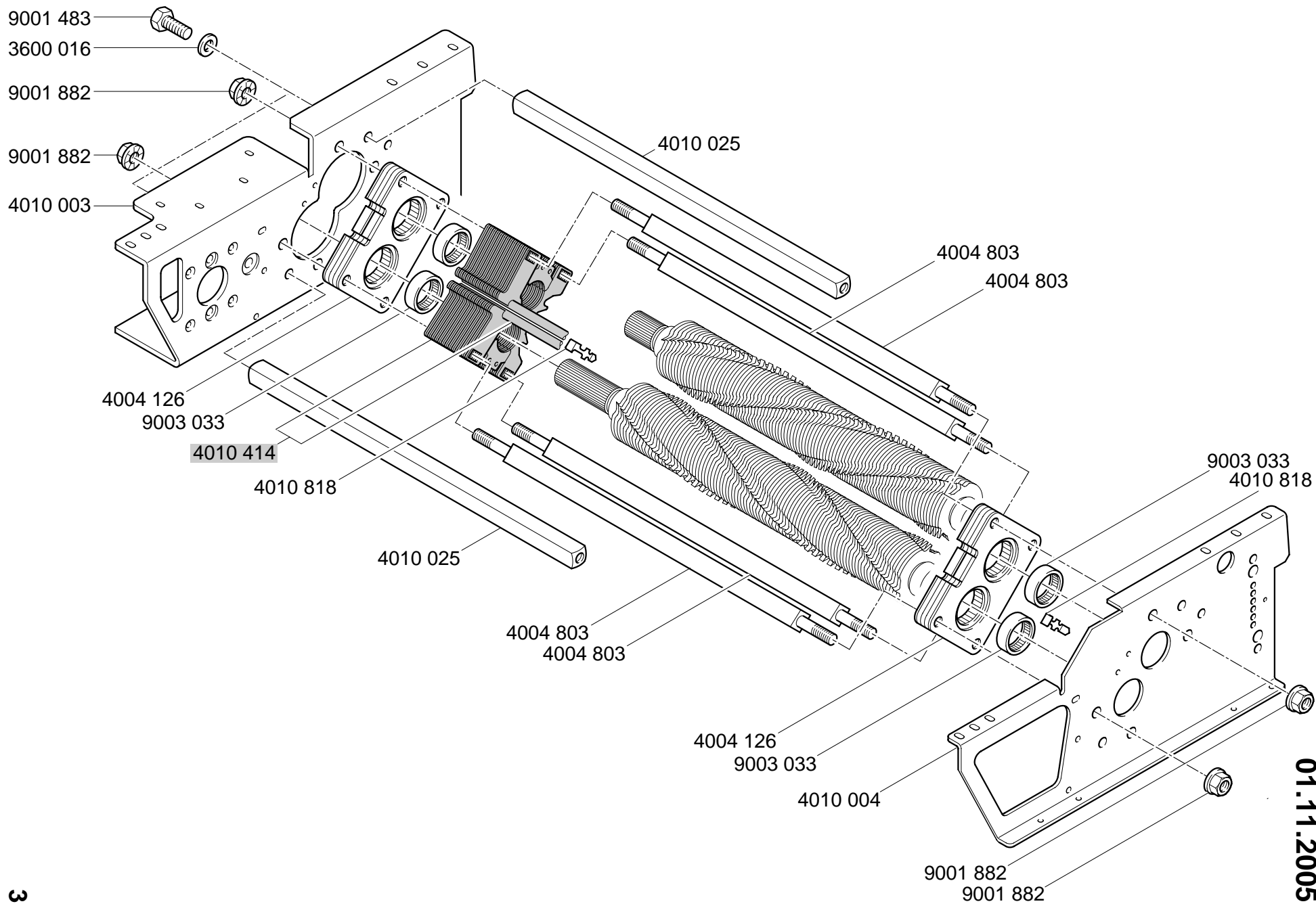


4010 141/Set

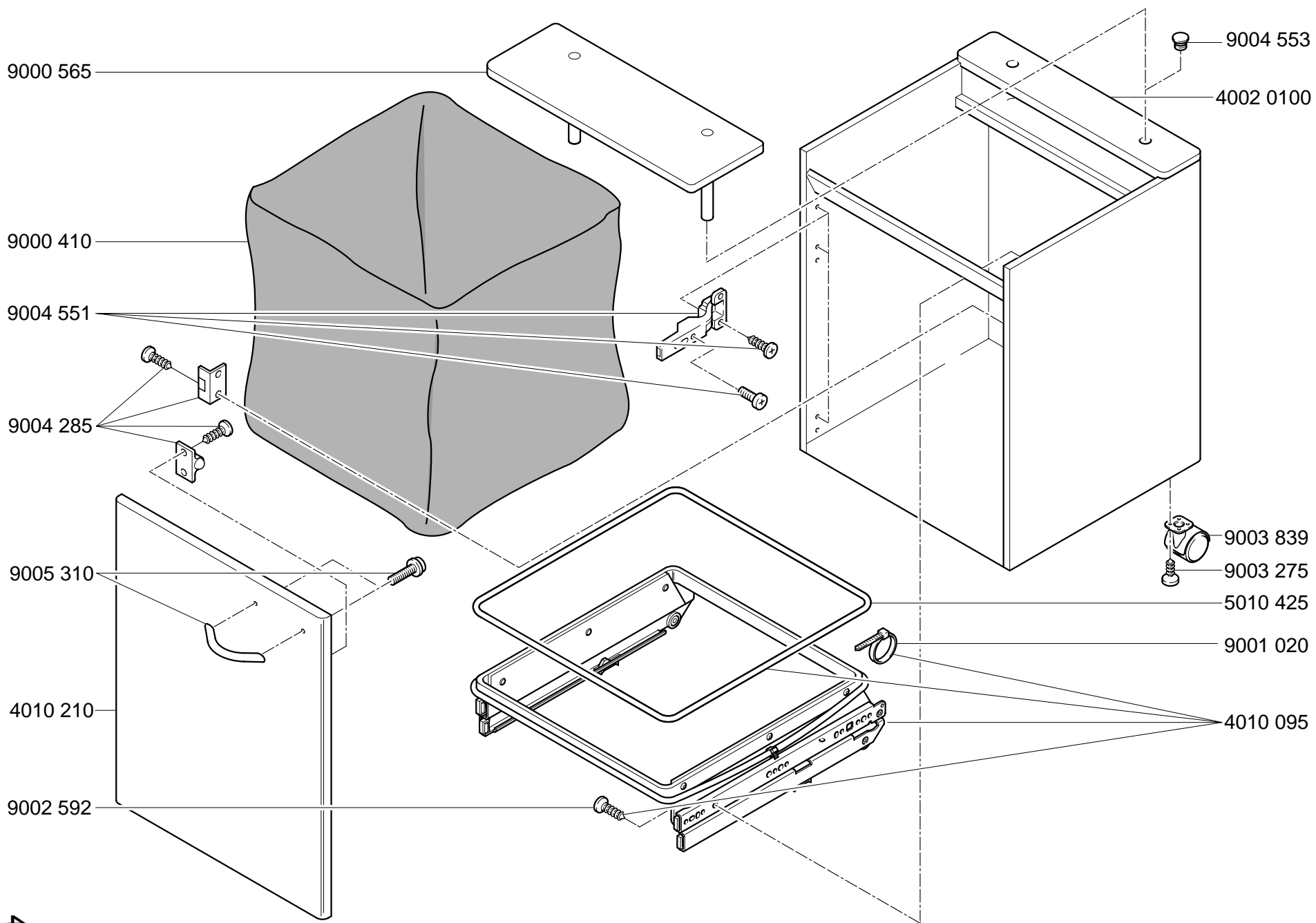
- 9004 549
- 4010 055
- 9003 199
- 9004 549
- 9001 900
- 9001 563
- 9001 364
- 9100 390/100-115V
- 9004 445/230-240V
- 9100 390/100-115V
- 9100 220/230-240V
- 4010 821
- 9002 131/230-240V
- 9002 093/100-115V
- 9001 682/100-115V
- 9002 131/230-240V
- 9002 093/100-115V
- 9001 682/100-115V
- 9005 567
- 9001 563
- 9003 084
- 9001 568
- 9002 578

Mod. 4002SMC A

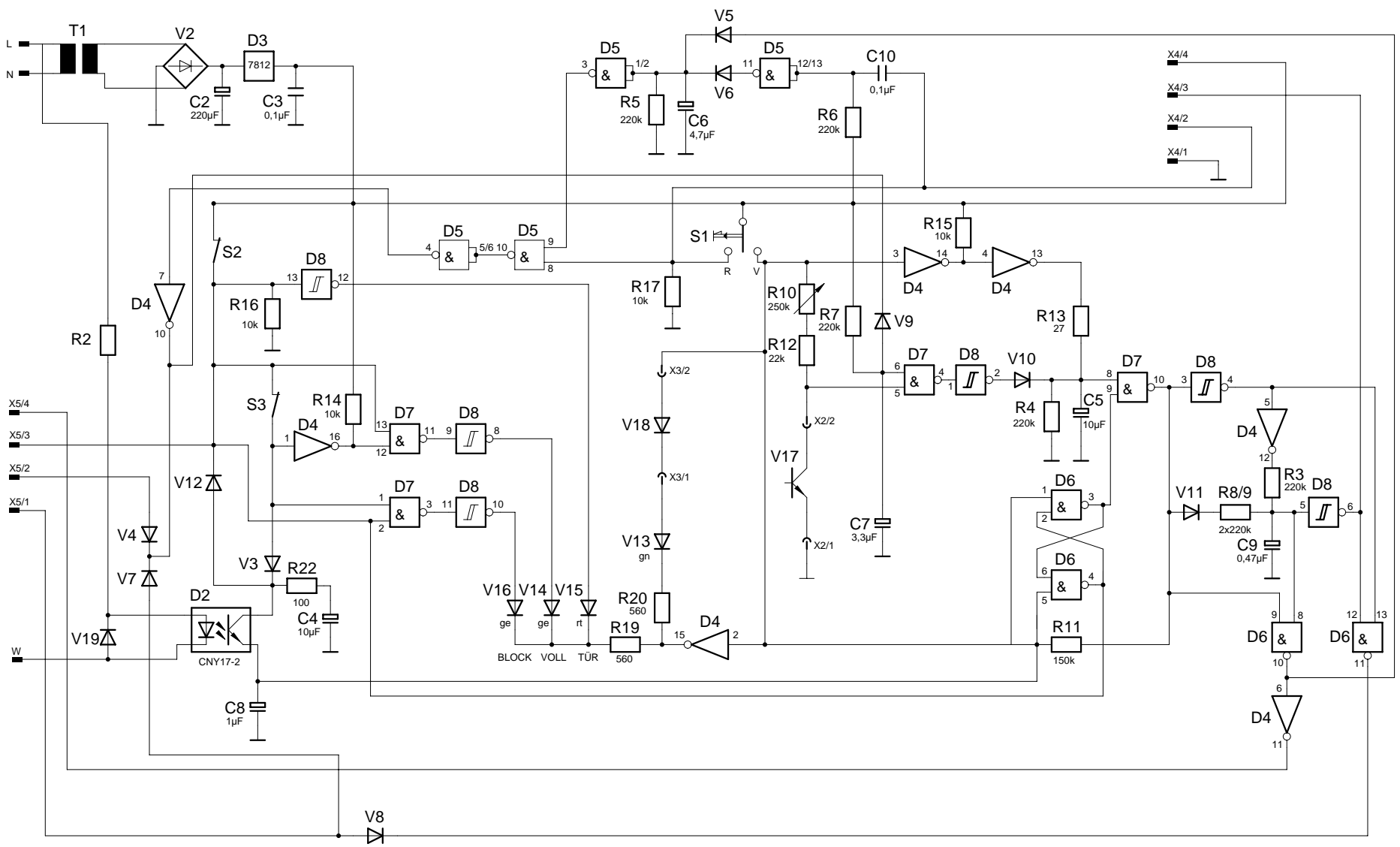
CROSS / CUT 01.11.2005 0,8x5mm



Mod. 4002 SMC A
 CROSS / CUT 0.8x5mm
 01.11.2005



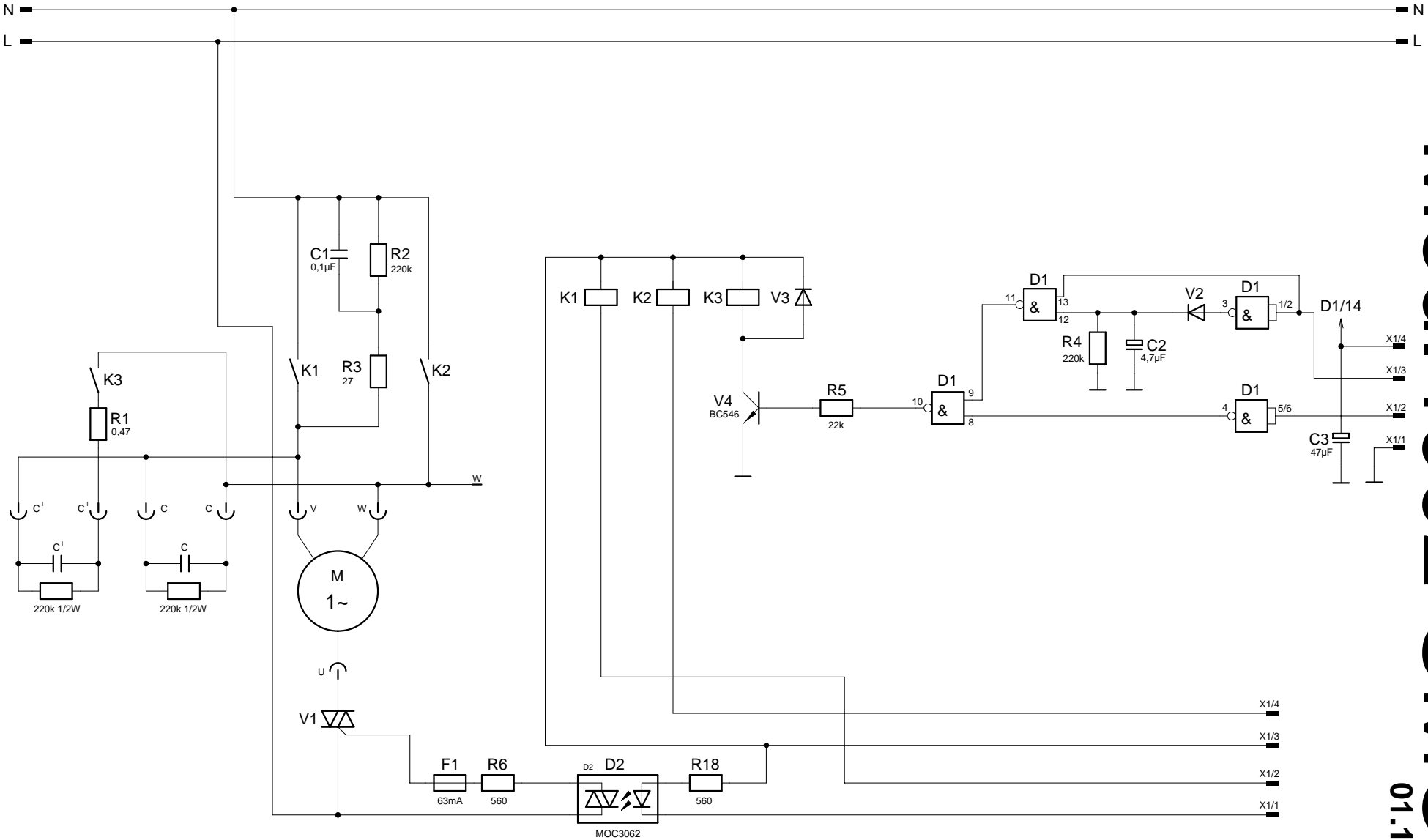
Mod. 4002
CROSS / CUT
SMC A
 0.8x5mm
 01.11.2005



Mod. 4002 SMC A
 CROSS / CUT 0.8x5mm
 01.11.2005

Stromlaufplan 4002 A
 schema de
 circuit électrique 4002A
 wiring diagram 4002 A

4010 106
 6



Stromlaufplan 4002 A
 schema de
 circuit électrique 4002 A
 wiring diagram 4002 A

Mod. 4002 SMC A
 CROSS / CUT
 0.8x5mm
 01.11.2005

4010 110
 7