

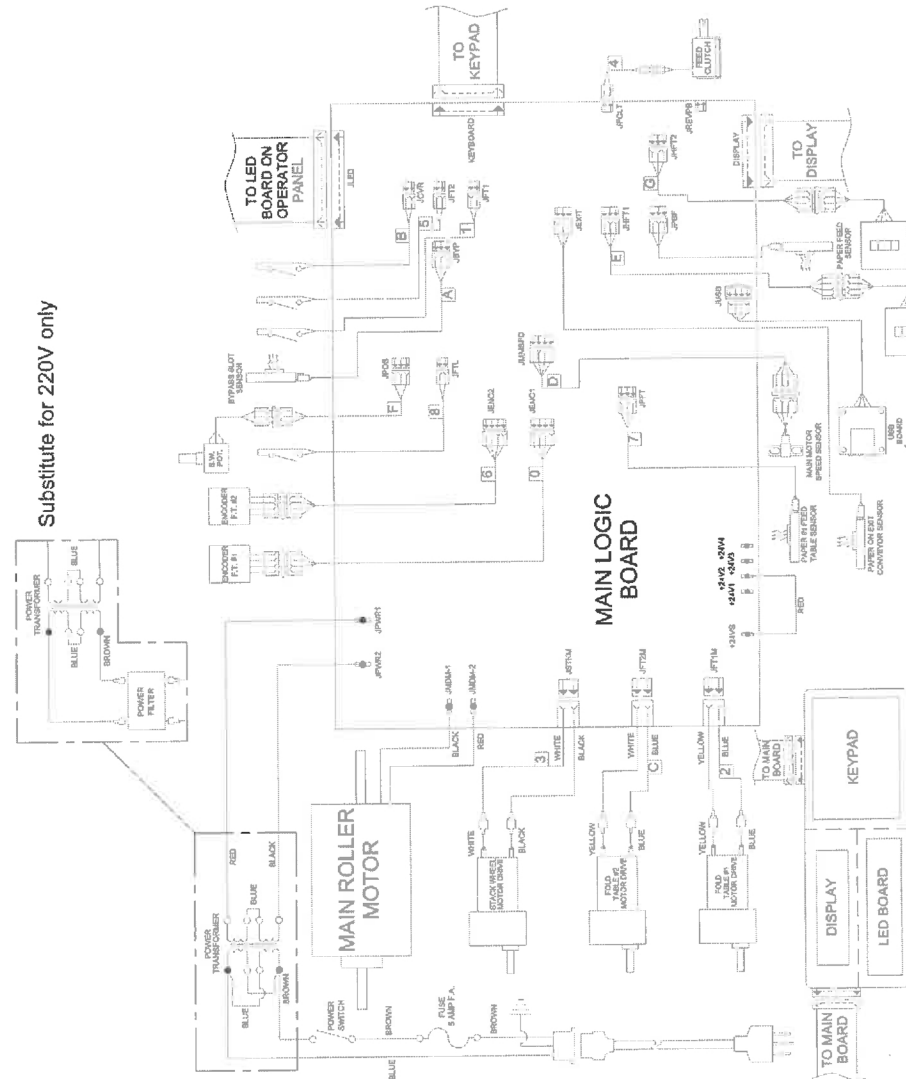
ProSource Packaging, Inc  
 15825 SH 249 Suite 25  
 Houston, TX 77086  
 281-453-8801  
 www.Machine-Solution.com



# 2051 SmartFold™ Parts List & Diagrams

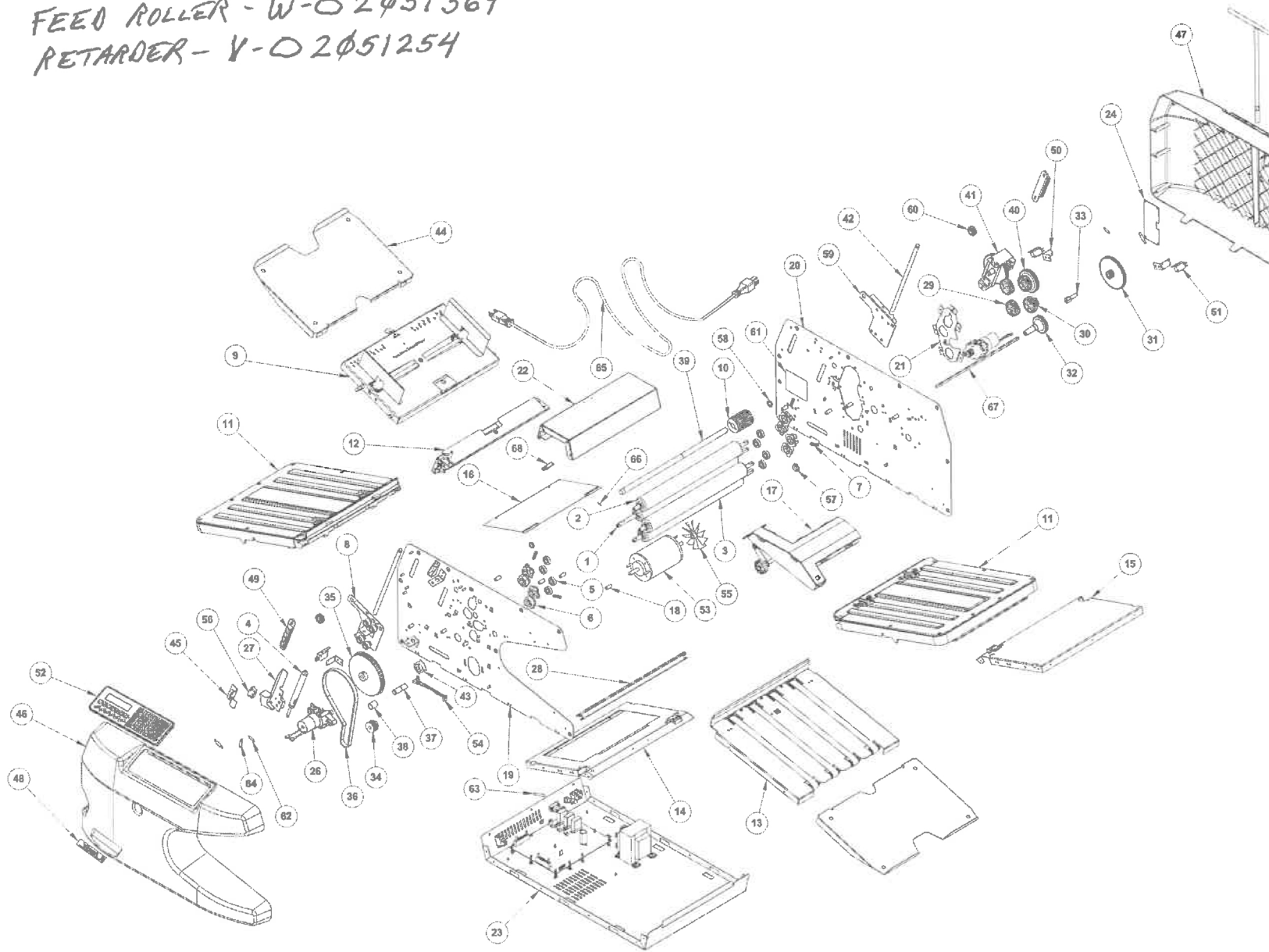


251 Wedcor Avenue, Wabash IN 46992  
 Phone: (260) 563-0641 • Fax: (260) 563-4575  
 Website: www.martinyale.com • Email: info@martinyale.com



| Item | Part No.    | Description              | Qty |
|------|-------------|--------------------------|-----|
| 1    | W-A2051016  | Second Roller Grind      | 1   |
| 2    | W-A2051013  | First Roller Grind       | 2   |
| 3    | W-A2051007  | Fourth Roller Grind      | 1   |
| 4    | M-S048015   | Damper .24 Rod x 3" Strk | 1   |
| 5    | M-S020016   | Bng .375id x .875od      | 8   |
| 6    | M-O2051008  | Bearing Carrier          | 8   |
| 7    | M-S031035   | Comp. Spring Blue        | 4   |
| 8    | W-A2051043  | Fd Tbl Guide Assy-F      | 1   |
| 9    | W-A2051041  | Feed Table Assy          | 1   |
| 10   | W-02051249  | Mold & Grind Feed Wheel  | 1   |
| 11   | W-A2051022  | Fold Table Assy          | 2   |
| 12   | W-A2051042  | Fd Tbl Bridge Assy       | 1   |
| 13   | W-A2051071  | Exit Conveyor Assy       | 1   |
| 14   | W-A2051105  | Motor Cover Assy         | 1   |
| 15   | W-A2051109  | Support Frame Assy       | 1   |
| 16   | W-F2051104  | P/C Access Panel         | 1   |
| 17   | W-A2051087  | Conv Stack Wheels        | 1   |
| 18   | W-O2051066  | Fold Tbl Lock Lug        | 8   |
| 19   | W-A2051002  | Rivet Front Frame        | 1   |
| 20   | W-A2051079  | Rivet Back Frame         | 1   |
| 21   | W-F2051080  | Roller Plate             | 1   |
| 22   | W-O2051110  | Top Cover                | 1   |
| 23   | W-F2051070  | P/C Base Plate           | 1   |
| 24   | W-O2051224  | P/C T-handle Cover       | 1   |
| 25   | M-S012016   | 8mm Nut Drv T-handle     | 1   |
| 26   | WRO2051019  | Fold Table Drive         | 2   |
| 27   | W-F2051040  | P/C Feed Table Lock      | 1   |
| 28   | W-N2051068  | Mach Diverter            | 1   |
| 29   | M-O003033   | Gear 24T V 3/8 ID        | 2   |
| 30   | M-O2051065  | 4th Roller Drv Gear      | 1   |
| 31   | M-O2051064  | Exit Conv Idlr Gear      | 1   |
| 32   | M-O2051063  | Exit Conv Drv Gear       | 1   |
| 33   | W-O2051062  | B/O Conv Idler Stud      | 1   |
| 34   | M-S022144   | Htd 3mm 25T Pulley       | 1   |
| 35   | W-A2051162  | 120T Pulley 3mm Htd      | 1   |
| 36   | M-S023055   | HTD 3mm 186T 9mm W       | 1   |
| 37   | W-O2051159  | B/O Idler Stud           | 1   |
| 38   | M-S013081   | 1/2 x 5/8 x 3/4 Bushing  | 1   |
| 39   | W-O2051253  | B/O Feed Wheel Shaft     | 1   |
| 40   | M-O2051067  | Second Roller Drv Gear   | 1   |
| 41   | W-A2051081  | Feed Wheel Clutch        | 1   |
| 42   | W-O2051086  | B/O Guide Shaft          | 2   |
| 43   | W-A2051119  | Opt. Encoder Assembly    | 1   |
| 44   | W-F2051056  | P/C Feed Table Ext       | 2   |
| 45   | W-F2051106  | P/C Load Sens Brkt       | 1   |
| 46   | M-O2051102  | Front Cover              | 1   |
| 47   | M-O2051103  | Rear Cover               | 1   |
| 48   | M-O2051115  | SmartFold Label          | 1   |
| 49   | M-O2051139  | Anti-twist Gearrack      | 2   |
| 50   | W-O970034   | Switch Bracket           | 3   |
| 51   | M-S033040   | Microswitch              | 3   |
| 52   | W-A2051135  | Operator Interface       | 1   |
| 53   | M-S021076   | 24V DC Motor             | 1   |
| 54   | W-A2051204  | Mtr Speed Sensor         | 1   |
| 55   | M-S037094   | 4" Fan Left H. Plast     | 1   |
| 56   | M-S033070   | Conveyor Switch 1601     | 1   |
| 57   | M-S014031   | 5/8 Iglide Clip Bng      | 1   |
| 58   | M-S014030   | 1/2 Iglide Clip Bng      | 2   |
| 59   | W-A2051051  | Fd Tbl Guide Assy-R      | 1   |
| 60   | M-O2051208  | Syncho Gear              | 2   |
| 61   | M-S015288   | Blank Serial Label       | 1   |
| 62   | M-S031029   | Spring Le-018b-z-m       | 1   |
| 63   | M-S63601106 | Fuse 5amp 110V           | 1   |
| 64   | M-S031105   | E-spr.24 x 1.25 x .031   | 3   |
| 65   | M-S045074   | 18-3 SVT 2M Cord         | 1   |

FEED ROLLER - W-O 2φ51369  
 RETARDER - V-O 2φ51254



| Item | Part No.   | Description        | Qty |
|------|------------|--------------------|-----|
| 66   | M-S018070  | 3/32 x 1 Dowel Pin | 1   |
| 67   | W-O2051073 | B/O Drive Shaft    | 1   |
| 68   | M-S045285  | Sensor Rtro Rflct  | 3   |

| Optional (220V only) |           |                      |     |
|----------------------|-----------|----------------------|-----|
| Item                 | Part No.  | Description          | Qty |
| 65                   | M-S037404 | Eur Pow Cord IEC320  | 1   |
| 65                   | M-S037405 | UK Power Cord IEC320 | 1   |