



Shred

Distruggidocumenti

Paper Shredders

KOBRA 400 COMBI LEVEL 005 E/S
Cod. 99.602ES

KOBRA 400 COMBI LEVEL 006 E/S
Cod. 99.603ES

SPARE PART LIST**MODEL:** KOBRA 400
COMBI E/S
LEVEL 005**ARTICLE NUMBER:**57.120 E/S COMMON PARTS**REF. DRAW:** 400-A / 400-B / 400 C / 400 D / 400 E / 400 H / 400 I / 400 L / 400 M / 400 N / 400 O

POS. CODICE	DESCRIZIONE	DESIGNATION
ITEM PART		
NUMBER		
001 01.028/V	GUIDA PORTASACCO CENTRALE	SLIDING BAG
002 01.055	MOBILE	CABINET
003 23.011	INTERUTTORE ON / OFF	ON/OFF SWITCH
004 32.002	RUOTA	CASTER
005 32.004	RUOTA	CASTER
006 51.016	TAPPO	CAP
007 51.038	CALAMITA	MAGNET
008 51.033	ANTIVIBRANTE	SHOCK ABSORBER
009 51.125	CALAMITA	MAGNET
010 51.051	PIASTRINA	HINGE PLATE
011 51.052	CERNIERA	HINGE
012 01.029/V	GUIDA PORTASACCO	SLIDING BAG
013 53.605	PASSACAVO	BUSHING
014 53.301	VITE M4x10	SCREW M4x10
015 01.026	PARATIA	PLATE
016 02.008/V	PARATIA IMBOCCO	CD/PAPER METAL ENTRY SLOT
017 02.009/V	FLAP CD/DVD	FLAP CD / DVD
018 02.010/V	FLAP	FLAP
019 02.094	COPERCHIO	PLASTIC COVER
020 02.060	DIFFUSORE LUMINOSO	LIGHT OPTICAL INDICATOR
021 02.085	GUIDE SPORTELLINO	FLAP SLOT COVERS
022 02.024	RETE METALLICA	METAL VENT
023 08.031	DISTANZIALE	ROD
024 10.052	INGRANAGGIO	GEAR
025 10.057	INGRANAGGIO	GEAR
026 11.021	CORONA Z=52	CHAIN WHEEL
028 16.039	SQUADRETTA	PLATE
029 16.148	PARATIA CHIUSURA	COVER PLATE
030 16.022	PARATIA CHIUSURA	COVER PLATE
031 16.038	STAFFA PER TRASPORTO	SHIPPING FIXING PLATE
032 23.012	PULSANTIERA	SWITCH PANEL
033 25.015	MICROINTERRUTTORE	MICROSWITCH
034 24.210	SENSORE MAGNETICO	MAGNETIC SENSOR
035 24.223	CABLAGGIO	WIRE HARNESS
036 24.228	ENCODER	PULSE DETECTOR
037 24.235	LED	LED LIGHT
038 24.236	LED	LED LIGHT
039 27.006	PORTADIODO	SENSOR HOLDER
043 27.008	PORTADIODO	SENSOR HOLDER
044 27.010	SUPPORTO SCHEDA	PCB HOLDER
045 27.068/A	FOTOCELLULA	ELECTRONIC EYES
046 27.069/A	FOTOCELLULA	ELECTRONIC EYES

SPARE PART LIST

MODEL: KOBRA 400 **ARTICLE NUMBER:** 57.120 E/S COMMON PARTS
COMBI LEVEL
005 E/S

REF. DRAW: 400-A / 400-B / 400 C / 400 D / 400 E / 400 H / 400 I / 400 L / 400 M / 400 N / 400 O

POS. CODICE	DESCRIZIONE	DESIGNATION
ITEM PART		
NUMBER		
047 27.104	SCHEDA ELETTRONICA	PC BOARD
048 XXXXX	SCHEDA ELETTRONICA (VEDI REVISIONE A)	PC BOARD (SEE REVISION A)
049 28.016/V	PORTASACCO CD/DVD	BAG HOLDER CD / DVD
050 28.017/V	PORTASACCO CARTA	BAG HOLDER
051 29.019	RINFORZO CARTONE	CARTON HOLDER
052 29.028	SCATOLA CARTONE	CARTON BOX
053 30.007	SET POLISTIROLO	STYROFOAM SET
054 31.004	PANNELLO MASONITE	MASONITE PANEL
055 31.005	BANCALE	SKID
056 31.006	ANGOLARE	WOODEN CORNER
057 31.009	ANGOLARE	ANGOLARE
058 35.001	MOLLA	SPRING
059 37.012	TARGA PULSANTE	SWITCH LABEL
060 37.175	TARGA MODELLO	MACHIN LABEL
061 37.085	TARGH. AVVERTENZE	WARNING LABEL
062 37.309	ETICHETTA ENERGY SMART	LABEL ENERGY SMART
063 37.314	ETICHETTA	LABEL
064 41.008	SQUADRETTA ENCODER	PLATE
065 41.011	PIASTRINA PER MAGNETI	MAGNET HOLDER
066 51.017	COPRIPULSANTI KOBRA	SWITCH CAP
067 51.035	CLIP	CLIP
068 51.037	MOLLA	SPRING
069 51.039	MAGNETE	MAGNET
070 51.062	SACCHETTO	BAG
071 51.064	SACCHETTO	BAG
072 51.072	SACCHETTO CD/DVD	BAG
073 53.001	VITE AD ALETTE	SPECIAL SCREW
074 53.129	RONDELLA M24	WASHER M24
075 53.128	RASAMENTO sp. 0,5mm	SPACER 0,5 mm
076 53.127	RASAMENTO sp. 0,3mm	SPACER 0,5 mm
077 53.131	RONDELLA M8	WASHER M8
078 53.141	RONDELLA DENTATA M3	TOOTHED WASHER M3
079 53.142	RONDELLA DENTATA M4	TOOTHED WASHER M4
080 53.143	RONDELLA DENTATA M5	TOOTHED WASHER M5
081 53.144	RONDELLA DENTATA M6	TOOTHED WASHER M6
082 53.146	RONDELLA DENTATA M8	TOOTHED WASHER M8
083 53.181	RONDELLA M3	WASHER M3
084 53.182	RONDELLA M4	WASHER M4

SPARE PART LIST**MODEL:** KOBRA 400 COMBI **ARTICLE NUMBER:** 57.120 E/S COMMON PARTS
LEVEL 005**REF. DRAW:** 400-A / 400-B / 400 C / 400 D / 400 E / 400 H / 400 I / 400 L / 400 M / 400 N / 400 O

POS. CODICE		DESCRIZIONE	DESIGNATION
ITEM	PART		
	NUMBER		
085	53.183	RONDELLA M5	WASHER M5
086	53.184	RONDELLA M6	WASHER M6
087	53.205	SEEGER 6 mm	LOCKING RING 6mm
088	53.207	SEEGER 25 mm	LOCKING RING 25mm
089	53.306	VITE 2,9 x 13	SCREW 2,9x13
090	53.315	VITE M4 x 12	SCREW 4x12
091	53.320	VITE M4,2 x 25	SCREW 4,2x25
092	53.331	VITE M4 x 10	SCREW 4x10
093	53.332	VITE M5 x 12	SCREW 5x12
094	53.334	VITE M6 x 12	SCREW 6x12
095	53.335	VITE M5 x 20	SCREW 5X20
096	53.351	GRANO M4 x 30	SCREW 4x30
097	53.361	VITE M4 x 10	SCREW 4x10
098	53.385	VITE M3 x 10	SCREW 3x10
099	53.386	VITE M3 x 30	SCREW 3X30
100	53.387	VITE M4 x 30	SCREW 4x30
101	53.417	CHIAVETTA 6 x 6 x 16	KEY 6x6x16
102	53.601	PASSACAVO	STRAIN RELIEF
103	53.604	DISTANZIALE	ROD
104	53.702	DADO M4	EXAGON NUT M4
105	53.704	DADO M6	EXAGON NUT M6
106	53.706	DADO M8	EXAGON NUT M8
107	53.802	RIVETTO 4 x 10	RIVET4x10
108	53.900	VITE PER LEGNO 8x100	SCREW 8x100
109	53.901	VITE M8 x 20	SCREW 8x20
110	53.902	VITE M8 x 30	SCREW 8x30
111	53.903	VITE M8 x 16	SCREW 8x16
112	60.001	GARANZIA	WARRANTY CARD
113	60.004	DICHAIRAZIONE DI CONFORMITA' "CE "	OPERATING INSTRUCTION
114	60.062	ISTRUZIONI	OPERATING INSTRUCTION
116	06.049	PETTINE	STRIPPER
117	36.001	ANELLO	RING
119	36.005	ANELLO	RING
120	08.061	TIRANTE 25 mm	ROD

SPARE PART LIST**MODEL:** KOBRA 400 COMBI **ARTICLE NUMBER:**57.120 E/S COMMON PARTS
LEVEL 005**REF. DRAW:** 400-A / 400-B / 400 C / 400 D / 400 E / 400 H / 400 I / 400 L / 400 M / 400 N / 400 O

POS. CODICE	DESCRIZIONE	DESIGNATION
ITEM PART		
NUMBER		
121 08.062	TIRANTE 31 mm	ROD
122 08.071	TIRANTE 20 mm	ROD
123 08.075	ANELLO	RING
124 16.113	PARATIA SACCO	BAG FULL FLAP
125 17.135	ALBERO CONDUTTORE	DRIVING KNIFE
126 17.136	ALBERO CONDOTTO	DRIVING KNIFE
127 18.033	PIASTRA DX	RIGHT PLATE
128 18.034	PIASTRA SX	LEFT PLATE
129 19.010	CUSCINETTO 6005	BEARING 6005
130 19.011	CUSCINETTO 6006	BEARING 6006
140 42.010	BLOCCHETTO	PAPER BLOCHS
150 42.008	BLOCCHETTO	PAPER BLOCHS
151 51.030	ANTIVIBRANTE	SHOCK ABSORBER
152 53.205	SEEGER 6 mm	LOCKING RING 6mm
153 53.214	SEEGER 36 mm	LOCKING RING 36mm
154 47.002	GHIERA	METAL RING
155 XXXX	DIFFUSORE OLIO (VEDI REVISIONE A)	OIL WICK (SEE REVISION A)
156 16.147	PARATIA CHIUSURA	COVER PLATE
158 16.211/V	SUPPORTO CONTENITORE OLIO	OIL BOTTLE HOLDER
159 16.210	SUPPORTO POMPA	PUMP HOLDER
160 XXXX	FLUSSOSTATO (VEDI REVISIONE A)	OIL FLOW SWITCH (SEE REVISION A)
161 37.172	ETICHETTA	LABEL
162 51.084	TAPPO	CAP
163 51.085	OLIO 1000 CC	SHREDDER OIL
164 51.558	TUBO	TUBE
165 XXXX	RACCORDO (VEDI REVISIONE A)	METAL CAP (SEE REVISION A)
166 53.801	RIVETTO	RIVET
173 26.003	SPIA STAND-BY	STAND BY SIGNAL
174 26.004	SPIA PORTA	DOOR BAG SIGNAL
176 53.703	DADO M5	EXAGON NUT M4

SPARE PART LIST**MODEL:** KOBRA 400 COMBI **ARTICLE NUMBER:** 57.233 E/S 230V-50Hz. SUPPLY (EUROPE)
LEVL 005 E/S**REF. DRAW:** 400-A / 400-B / 400 C / 400 D / 400 E

POS.	CODICE	DESCRIZIONE	DESIGNATION
ITEM	PART		
	NUMBER		
027	12.006	PIGNONE Z=13	CHAIN WHEEL
115	05.005	LAMA	BLADE
118	05.009	LAMA	BLADE
157	24.207	POMPA	PUMP
168	07.083	MOTORIDUTTORE	GEAR MOTOR
169	13.033	CATENA	CHAIN
170	14.028	PIASTRA RIDUTTORE	GEARMOTOR HOLDER
171	22.012	CONDENSATORE 45 Mf	CONDENSATORE 45 Mf
172	24.003	CAVO 230 V	POWER CORD 230 V

SPARE PART LIST**MODEL:** KOBRA 400 COMBI **ARTICLE NUMBER:** 57.401 E/S
LEVL 005 E/S 115V-60Hz SUPPLY (USA/CANADA/ARABIA)**REF. DRAW:** 400-A / 400-B / 400 C / 400 D / 400 E

POS.	CODICE	DESCRIZIONE	DESIGNATION
ITEM	PART		
	NUMBER		
027	12.006	PIGNONE Z=13	CHAIN WHEEL
115	05.005	LAMA	BLADE
118	05.007	LAMA	BLADE
157	24.208	POMPA	PUMP
168	07.080	MOTORIDUTTORE	GEAR MOTOR
169	XXXX	CATENA (VEDI REVISIONE B)	CHAIN (SEE REVISION B)
170	14.029	PIASTRA RIDUTTORE	GEARMOTOR HOLDER
171	22.009	CONDENSATORE 50 Mf	CONDENSATORE 50 Mf
172	24.005	CAVO 115 V	POWER CORD 115 V

SPARE PART LIST

MODEL: KOBRA 400 COMBI **ARTICLE NUMBER:** 57.277 E/S
LEVL 005 E/S 110V-60Hz SUPPLY (TAIWAN / BRASILE)
REF. DRAW: 400-A / 400-B / 400 C / 400 D / 400 E

POS. CODICE		DESCRIZIONE	DESIGNATION
ITEM PART	NUMBER		
027	12.006	PIGNONE Z=13	CHAIN WHEEL
115	05.005	LAMA	BLADE
118	05.009	LAMA	BLADE
157	24.208	POMPA	PUMP
168	07.080	MOTORIDUTTORE	GEAR MOTOR
169	XXXX	CATENA (VEDI REVISIONE B)	CHAIN (SEE REVISION B)
170	14.029	PIASTRA RIDUTTORE	GEARMOTOR HOLDER
171	22.009	CONDENSATORE 50 Mf	CONDENSATORE 50 Mf
172	24.005	CAVO 110 V	POWER CORD 110 V

SPARE PART LIST

MODEL: KOBRA 400 COMBI **ARTICLE NUMBER:** 57.483 E/S
LEVL 005 E/S 100V-50 / 60Hz SUPPLY (JAPAN)
REF. DRAW: 400-A / 400-B / 400 C / 400 D / 400 E

POS. CODICE		DESCRIZIONE	DESIGNATION
ITEM PART	NUMBER		
027	12.006	PIGNONE Z=13	CHAIN WHEEL
115	05.005	LAMA	BLADE
118	05.009	LAMA	BLADE
157	24.208	POMPA	PUMP
168	07.080	MOTORIDUTTORE	GEAR MOTOR
169	13.007	CATENA	CHAIN
170	14.029	PIASTRA RIDUTTORE	GEARMOTOR HOLDER
171	22.009	CONDENSATORE 50 Mf	CONDENSATORE 50 Mf
172	24.011	CAVO 100 V	POWER CORD 100 V

SPARE PART LIST**MODEL:** KOBRA 400 COMBI **ARTICLE NUMBER:** 57.523 E/S 230V-50Hz. SUPPLY (ISRAEL)
LEVL 005 E/S**REF. DRAW:** 400-A / 400-B / 400 C / 400 D / 400 E

POS.	CODICE	DESCRIZIONE	DESIGNATION
ITEM	PART		
	NUMBER		
027	12.006	PIGNONE Z=13	CHAIN WHEEL
115	05.005	LAMA	BLADE
118	05.009	LAMA	BLADE
157	24.207	POMPA	PUMP
168	07.083	MOTORIDUTTORE	GEAR MOTOR
169	13.033	CATENA	CHAIN
170	14.028	PIASTRA RIDUTTORE	GEARMOTOR HOLDER
171	22.012	CONDENSATORE 45 Mf	CONDENSATORE 45 Mf
172	24.051	CAVO 230 V	POWER CORD 230 V

SPARE PART LIST**MODEL:** KOBRA 400 COMBI **ARTICLE NUMBER:** 57.791 E/S 230V-50Hz. SUPPLY
LEVL 005 E/S (H.K./ BAHRAIN)**REF. DRAW:** 400-A / 400-B / 400 C / 400 D / 400 E

POS.	CODICE	DESCRIZIONE	DESIGNATION
ITEM	PART		
	NUMBER		
027	12.006	PIGNONE Z=13	CHAIN WHEEL
115	05.005	LAMA	BLADE
118	05.009	LAMA	BLADE
157	24.207	POMPA	PUMP
168	07.083	MOTORIDUTTORE	GEAR MOTOR
169	13.033	CATENA	CHAIN
170	14.028	PIASTRA RIDUTTORE	GEARMOTOR HOLDER
171	22.012	CONDENSATORE 45 Mf	CONDENSATORE 45 Mf
172	24.054	CAVO 230 V	POWER CORD 230 V

SPARE PART LIST

MODEL: KOBRA 400 COMBI **ARTICLE NUMBER:** 57.722 E/S 240V-50Hz. SUPPLY
LEVL 005 E/S (UK. / MALESIA)

REF. DRAW: 400-A / 400-B / 400 C / 400 D / 400 E

POS. CODICE		DESCRIZIONE	DESIGNATION
ITEM PART	NUMBER		
027	12.006	PIGNONE Z=13	CHAIN WHEEL
115	05.005	LAMA	BLADE
118	05.009	LAMA	BLADE
157	24.207	POMPA	PUMP
168	07.083	MOTORIDUTTORE	GEAR MOTOR
169	13.033	CATENA	CHAIN
170	14.028	PIASTRA RIDUTTORE	GEARMOTOR HOLDER
171	22.012	CONDENSATORE 45 Mf	CONDENSATORE 45 Mf
172	24.054	CAVO 230 V	POWER CORD 230 V

SPARE PART LIST

MODEL: KOBRA 400 COMBI **ARTICLE NUMBER:** 57.806 E/S 240V-50Hz. SUPPLY
LEVL 005 E/S (AUSTRALIA)

REF. DRAW: 400-A / 400-B / 400 C / 400 D / 400 E

POS. CODICE		DESCRIZIONE	DESIGNATION
ITEM PART	NUMBER		
027	12.006	PIGNONE Z=13	CHAIN WHEEL
115	05.005	LAMA	BLADE
118	05.009	LAMA	BLADE
157	24.207	POMPA	PUMP
168	07.083	MOTORIDUTTORE	GEAR MOTOR
169	13.033	CATENA	CHAIN
170	14.028	PIASTRA RIDUTTORE	GEARMOTOR HOLDER
171	22.012	CONDENSATORE 45 Mf	CONDENSATORE 45 Mf
172	24.013	CAVO 230 V	POWER CORD 230 V

SPARE PART LIST

MODEL: KOBRA 400 COMBI **ARTICLE NUMBER:** 57.871 E/S 240V-50Hz. SUPPLY
LEVL 005 E/S (INDIA)

REF. DRAW: 400-A / 400-B / 400 C / 400 D / 400 E

POS. CODICE		DESCRIZIONE	DESIGNATION
ITEM PART	NUMBER		
027	12.006	PIGNONE Z=13	CHAIN WHEEL
115	05.005	LAMA	BLADE
118	05.009	LAMA	BLADE
157	24.207	POMPA	PUMP
168	07.083	MOTORIDUTTORE	GEAR MOTOR
169	13.033	CATENA	CHAIN
170	14.028	PIASTRA RIDUTTORE	GEARMOTOR HOLDER
171	22.012	CONDENSATORE 45 Mf	CONDENSATORE 45 Mf
172	24.003	CAVO 230 V	POWER CORD 230 V

SPARE PART LIST

MODEL: KOBRA 400 COMBI **ARTICLE NUMBER:** 58.054 E/S 220V-60Hz. SUPPLY
LEVL 005 E/S (BZ. / ARABIA / PH.)

REF. DRAW: 400-A / 400-B / 400 C / 400 D / 400 E

POS. CODICE		DESCRIZIONE	DESIGNATION
ITEM PART	NUMBER		
027	12.006	PIGNONE Z=13	CHAIN WHEEL
115	05.005	LAMA	BLADE
118	05.009	LAMA	BLADE
157	24.207	POMPA	PUMP
168	07.083	MOTORIDUTTORE	GEAR MOTOR
169	13.033	CATENA	CHAIN
170	14.028	PIASTRA RIDUTTORE	GEARMOTOR HOLDER
171	22.009	CONDENSATORE 50 Mf	CONDENSATORE 50 Mf
172	24.005	CAVO	POWER CORD

REVISIONE " 0 " / REVISION " 0 "

MODEL: KOBRA 400 COMBI LEVEL 005
REF. DRAWING: 400 B / 400 C / 400 L / 400 M
EFFECTIVE PRODUCTION: DATE: 12.09.08
**UNITS WITH SERIAL
NUMBER UP TO :** Serial number 230V : 1055/0608
Serial number 115V : 1002/1003
Serial number 110V : 1000
Serial number 100V : 1000

SPARE PART LIST

POS. ITEM	CODICE PART NUMBER	DESCRIZIONE	DESIGNATION
048	27.110	SCHEDA ELETTRONICA	PC BOARD
155	51.579	DIFFUSORE OLIO	OIL WICK
160	24.206	FLUSSOSTATO	OIL FLOW SWITCH
165	51.578	RACCORDO	METAL CAP

REVISIONE " A " / REVISION " A "

MODEL: KOBRA 400 COMBI LEVEL 005
REF. DRAWING: 400 B REV. A / 400 C REV.A 400 N / 400 O
EFFECTIVE PRODUCTION: DATE: 12.09.08
UNITS FROM SERIAL
NUMBER AND AFTER : Serial number 230V : 1056/0908
Serial number 115V : 1003
Serial number 110V : 1000
Serial number 100V : 1000

SPARE PART LIST

POS. ITEM	CODICE PART NUMBER	DESCRIZIONE	DESIGNATION
048	27.110/A	SCHEDA ELETTRONICA	PC BOARD
155	51.576	DIFFUSORE OLIO	OIL WICK
165	51.585	FASCETTA	PLASTIC CLAMP
160	24.209	PRESSOSTATO	OIL PRESSURE SWITCH
177	51.582	TUBO	TUBE
178	51.564	RACCORDO A T	T-JUNCTION

SPARE PART LIST**MODEL:** KOBRA 400
COMBI E/S
LEVEL 006**ARTICLE NUMBER:**57.121 E/S COMMON PARTS**REF. DRAW:** 400-A / 400 D / 400 F / 400 G / 400 E / 400 H / 400 I / 400 L / 400 M / 400 N / 400 O

POS. CODICE	DESCRIZIONE	DESIGNATION
ITEM PART		
NUMBER		
001 01.028/V	GUIDA PORTASACCO CENTRALE	SLIDING BAG
002 01.055	MOBILE	CABINET
003 23.011	INTERUTTORE ON / OFF	ON/OFF SWITCH
004 32.002	RUOTA	CASTER
005 32.004	RUOTA	CASTER
006 51.016	TAPPO	CAP
007 51.038	CALAMITA	MAGNET
008 51.033	ANTIVIBRANTE	SHOCK ABSORBER
009 51.125	CALAMITA	MAGNET
010 51.051	PIASTRINA	HINGE PLATE
011 51.052	CERNIERA	HINGE
012 01.029/V	GUIDA PORTASACCO	SLIDING BAG
013 53.605	PASSACAPO	BUSHING
014 53.301	VITE M4x10	SCREW M4x10
015 01.026	PARATIA	PLATE
016 02.008/V	PARATIA IMBOCCO	CD/PAPER METAL ENTRY SLOT
017 02.009/V	FLAP CD/DVD	FLAP CD / DVD
018 02.010/V	FLAP	FLAP
019 02.094	COPERCHIO	PLASTIC COVER
020 02.060	DIFFUSORE LUMINOSO	LIGHT OPTICAL INDICATOR
021 02.085	GUIDE SPORTELLINO	FLAP SLOT COVERS
022 02.024	RETE METALLICA	METAL VENT
023 08.031	DISTANZIALE	ROD
024 10.052	INGRANAGGIO	GEAR
025 10.057	INGRANAGGIO	GEAR
026 11.021	CORONA Z=52	CHAIN WHEEL
028 16.039	SQUADRETTA	PLATE
029 16.148	PARATIA CHIUSURA	COVER PLATE
030 16.022	PARATIA CHIUSURA	COVER PLATE
031 16.038	STAFFA PER TRASPORTO	SHIPPING FIXING PLATE
032 23.012	PULSANTIERA	SWITCH PANEL
033 25.015	MICROINTERRUTTORE	MICROSWITCH
034 24.210	SENSORE MAGNETICO	MAGNETIC SENSOR
035 24.223	CABLAGGIO	WIRE HARNESS
036 24.228	ENCODER	PULSE DETECTOR
037 24.235	LED	LED LIGHT
038 24.236	LED	LED LIGHT
039 27.006	PORTADIODO	SENSOR HOLDER
043 27.008	PORTADIODO	SENSOR HOLDER
044 27.010	SUPPORTO SCHEDA	PCB HOLDER
045 27.068/A	FOTOCELLULA	ELECTRONIC EYES
046 27.069/A	FOTOCELLULA	ELECTRONIC EYES

SPARE PART LIST

MODEL: KOBRA 400 **ARTICLE NUMBER:** 57.121 E/S COMMON PARTS
COMBI LEVEL
006 E/S

REF. DRAW: 400-A / 400 D / 400 F / 400 G / 400 E / 400 H / 400 I / 400 L / 400 M / 400 N / 400 O

POS. CODICE	DESCRIZIONE	DESIGNATION
ITEM PART		
NUMBER		
047 27.104	SCHEDA ELETTRONICA	PC BOARD
048 XXXXX	SCHEDA ELETTRONICA (VEDI REVISIONE A)	PC BOARD (SEE REVISION A)
049 28.016/V	PORTASACCO CD/DVD	BAG HOLDER CD / DVD
050 28.017/V	PORTASACCO CARTA	BAG HOLDER
051 29.019	RINFORZO CARTONE	CARTON HOLDER
052 29.028	SCATOLA CARTONE	CARTON BOX
053 30.007	SET POLISTIROLO	STYROFOAM SET
054 31.004	PANNELLO MASONITE	MASONITE PANEL
055 31.005	BANCALE	SKID
056 31.006	ANGOLARE	WOODEN CORNER
057 31.009	ANGOLARE	ANGOLARE
058 35.001	MOLLA	SPRING
059 37.012	TARGA PULSANTE	SWITCH LABEL
060 37.175	TARGA MODELLO	MACHIN LABEL
061 37.085	TARGH. AVVERTENZE	WARNING LABEL
062 37.309	ETICHETTA ENERGY SMART	LABEL ENERGY SMART
063 37.314	ETICHETTA	LABEL
064 41.008	SQUADRETTA ENCODER	PLATE
065 41.011	PIASTRINA PER MAGNETI	MAGNET HOLDER
066 51.017	COPRIPULSANTI KOBRA	SWITCH CAP
067 51.035	CLIP	CLIP
068 51.037	MOLLA	SPRING
069 51.039	MAGNETE	MAGNET
070 51.062	SACCHETTO	BAG
071 51.064	SACCHETTO	BAG
072 51.072	SACCHETTO CD/DVD	BAG
073 53.001	VITE AD ALETTE	SPECIAL SCREW
074 53.129	RONDELLA M24	WASHER M24
075 53.128	RASAMENTO sp. 0,5mm	SPACER 0,5 mm
076 53.127	RASAMENTO sp. 0,3mm	SPACER 0,5 mm
077 53.131	RONDELLA M8	WASHER M8
078 53.141	RONDELLA DENTATA M3	TOOTHED WASHER M3
079 53.142	RONDELLA DENTATA M4	TOOTHED WASHER M4
080 53.143	RONDELLA DENTATA M5	TOOTHED WASHER M5
081 53.144	RONDELLA DENTATA M6	TOOTHED WASHER M6
082 53.146	RONDELLA DENTATA M8	TOOTHED WASHER M8
083 53.181	RONDELLA M3	WASHER M3
084 53.182	RONDELLA M4	WASHER M4

SPARE PART LIST**MODEL:** KOBRA 400 COMBI **ARTICLE NUMBER:**57.121 E/S COMMON PARTS
LEVEL 006**REF. DRAW:** 400-A / 400 D /400 F / 400 G / 400 E / 400 H / 400 I / 400 L / 400 M / 400 N / 400 O

POS. CODICE		DESCRIZIONE	DESIGNATION
ITEM PART	NUMBER		
085	53.183	RONDELLA M5	WASHER M5
086	53.184	RONDELLA M6	WASHER M6
087	53.205	SEEGER 6 mm	LOCKING RING 6mm
088	53.207	SEEGER 25 mm	LOCKING RING 25mm
089	53.306	VITE 2,9 x 13	SCREW 2,9x13
090	53.315	VITE M4 x 12	SCREW 4x12
091	53.320	VITE M4,2 x 25	SCREW 4,2x25
092	53.331	VITE M4 x 10	SCREW 4x10
093	53.332	VITE M5 x 12	SCREW 5x12
094	53.334	VITE M6 x 12	SCREW 6x12
095	53.335	VITE M5 x 20	SCREW 5X20
096	53.351	GRANO M4 x 30	SCREW 4x30
097	53.361	VITE M4 x 10	SCREW 4x10
098	53.385	VITE M3 x 10	SCREW 3x10
099	53.386	VITE M3 x 30	SCREW 3X30
100	53.387	VITE M4 x 30	SCREW 4x30
101	53.417	CHIAVETTA 6 x 6 x 16	KEY 6x6x16
102	53.601	PASSACAVO	STRAIN RELIEF
103	53.604	DISTANZIALE	ROD
104	53.702	DADO M4	EXAGON NUT M4
105	53.704	DADO M6	EXAGON NUT M6
106	53.706	DADO M8	EXAGON NUT M8
107	53.802	RIVETTO 4 x 10	RIVET4x10
108	53.900	VITE PER LEGNO 8x100	SCREW 8x100
109	53.901	VITE M8 x 20	SCREW 8x20
110	53.902	VITE M8 x 30	SCREW 8x30
111	53.903	VITE M8 x 16	SCREW 8x16
112	60.001	GARANZIA	WARRANTY CARD
113	60.004	DICHAIRAZIONE DI CONFORMITA' "CE "	OPERATING INSTRUCTION
114	60.062	ISTRUZIONI	OPERATING INSTRUCTION
116	06.049	PETTINE	STRIPPER
117	36.003	ANELLO	RING
119	36.005	ANELLO	RING
120	08.061	TIRANTE 25 mm	ROD

SPARE PART LIST**MODEL:** KOBRA 400 COMBI **ARTICLE NUMBER:**57.121 E/S COMMON PARTS
LEVEL 006**REF. DRAW:** 400-A / 400 D /400 F / 400 G / 400 E / 400 H / 400 I / 400 L / 400 M / 400 N / 400 O

POS. CODICE	DESCRIZIONE	DESIGNATION
ITEM PART		
NUMBER		
121 08.062	TIRANTE 31 mm	ROD
122 08.071	TIRANTE 20 mm	ROD
123 08.075	ANELLO	RING
124 16.113	PARATIA SACCO	BAG FULL FLAP
125 17.135	ALBERO CONDUTTORE	DRIVING KNIFE
126 17.136	ALBERO CONDOTTO	DRIVING KNIFE
127 18.033	PIASTRA DX	RIGHT PLATE
128 18.034	PIASTRA SX	LEFT PLATE
129 19.010	CUSCINETTO 6005	BEARING 6005
130 19.011	CUSCINETTO 6006	BEARING 6006
140 42.010	BLOCCHETTO	PAPER BLOCHS
150 42.008	BLOCCHETTO	PAPER BLOCHS
151 51.030	ANTIVIBRANTE	SHOCK ABSORBER
152 53.205	SEEGER 6 mm	LOCKING RING 6mm
153 53.214	SEEGER 36 mm	LOCKING RING 36mm
154 47.002	GHIERA	METAL RING
155 XXXX	DIFFUSORE OLIO (VEDI REVISIONE A)	OIL WICK (SEE REVISION A)
156 16.147	PARATIA CHIUSURA	COVER PLATE
158 16.211/V	PROTEZIONE CONTENITORE OLIO	OIL BOTTLE HOLDER
159 16.210	SUPPORTO POMPA	PUMP HOLDER
160 XXXX	FLUSSOSTATO (VEDI REVISIONE A)	OIL FLOW SWITCH (SEE REVISION A)
161 37.172	ETICHETTA	LABEL
162 51.084	TAPPO	CAP
163 51.085	OLIO 1000 CC	SHREDDER OIL
164 51.558	TUBO	TUBE
165 XXXX	RACCORDO (VEDI REVISIONE A)	METAL CAP (SEE REVISION A)
166 53.801	RIVETTO	RIVET
173 26.003	SPIA STAND-BY	STAND BY SIGNAL
174 26.004	SPIA PORTA	DOOR BAG SIGNAL
176 53.703	DADO M5	EXAGON NUT M4
179 06.050	PETTINE	STRIPPER

SPARE PART LIST**MODEL:** KOBRA 400 COMBI **ARTICLE NUMBER:** 57.223 E/S 230V-50Hz. SUPPLY (EUROPE)
LEVL 006 E/S**REF. DRAW:** 400-A / 400 F / 400 G / 400 E

POS.	CODICE	DESCRIZIONE	DESIGNATION
ITEM	PART		
	NUMBER		
027	12.006	PIGNONE Z=13	CHAIN WHEEL
115	05.007	LAMA	BLADE
118	05.009	LAMA	BLADE
157	24.207	POMPA	PUMP
168	07.083	MOTORIDUTTORE	GEAR MOTOR
169	13.033	CATENA	CHAIN
170	14.028	PIASTRA RIDUTTORE	GEARMOTOR HOLDER
171	22.012	CONDENSATORE 45 Mf	CONDENSATORE 45 Mf
172	24.003	CAVO 230 V	POWER CORD 230 V

SPARE PART LIST**MODEL:** KOBRA 400 COMBI **ARTICLE NUMBER:** 57.331 E/S
LEVL 006 E/S 115V-60Hz SUPPLY (USA / CANADA / ARABIA)**REF. DRAW:** 400-A / 400 F / 400 G / 400 E

POS.	CODICE	DESCRIZIONE	DESIGNATION
ITEM	PART		
	NUMBER		
027	XXXX	PIGNONE Z=16 (VEDI REVISIONE B)	CHAIN WHEEL (SEE REVISION B)
115	05.007	LAMA	BLADE
157	24.208	POMPA	PUMP
168	07.080	MOTORIDUTTORE	GEAR MOTOR
169	XXXX	CATENA (VEDI REVISIONE B)	CHAIN (SEE REVISION B)
170	14.029	PIASTRA RIDUTTORE	GEARMOTOR HOLDER
171	22.009	CONDENSATORE 50 Mf	CONDENSATORE 50 Mf
172	24.005	CAVO 115 V	POWER CORD 115 V

SPARE PART LIST

MODEL: KOBRA 400 COMBI **ARTICLE NUMBER:** 57.276 E/S
LEVL 006 E/S 110V-60Hz SUPPLY (TAIWAN / BRASILE)
REF. DRAW: 400-A /400 F / 400 G / 400 E

POS. CODICE		DESCRIZIONE	DESIGNATION
ITEM PART NUMBER			
027	XXXX	PIGNONE Z=16 (VEDI REVISIONE B)	CHAIN WHEEL (SEE REVISION B)
115	05.007	LAMA	BLADE
118	05.009	LAMA	BLADE
157	24.208	POMPA	PUMP
168	07.080	MOTORIDUTTORE	GEAR MOTOR
169	XXXX	CATENA (VEDI REVISIONE B)	CHAIN (SEE REVISION B)
170	14.029	PIASTRA RIDUTTORE	GEARMOTOR HOLDER
171	22.009	CONDENSATORE 50 Mf	CONDENSATORE 50 Mf
172	24.005	CAVO 110 V	POWER CORD 110 V

SPARE PART LIST

MODEL: KOBRA 400 COMBI **ARTICLE NUMBER:** 57.484 E/S
LEVL 006 E/S 100V-50 / 60Hz SUPPLY (JAPAN)
REF. DRAW: 400-A /400 F / 400 G / 400 E

POS. CODICE		DESCRIZIONE	DESIGNATION
ITEM PART NUMBER			
027	12.006	PIGNONE Z=13	CHAIN WHEEL
115	05.007	LAMA	BLADE
118	05.009	LAMA	BLADE
157	24.208	POMPA	PUMP
168	07.080	MOTORIDUTTORE	GEAR MOTOR
169	13.007	CATENA	CHAIN
170	14.029	PIASTRA RIDUTTORE	GEARMOTOR HOLDER
171	22.009	CONDENSATORE 50 Mf	CONDENSATORE 50 Mf
172	24.011	CAVO 100 V	POWER CORD 100 V

SPARE PART LIST**MODEL:** KOBRA 400 COMBI **ARTICLE NUMBER:** 57.526 E/S 230V-50Hz. SUPPLY (ISRAEL)
LEVL 006 E/S**REF. DRAW:** 400-A / 400 F / 400 G / 400 E

POS.	CODICE	DESCRIZIONE	DESIGNATION
ITEM	PART		
	NUMBER		
027	12.006	PIGNONE Z=13	CHAIN WHEEL
115	05.007	LAMA	BLADE
118	05.009	LAMA	BLADE
157	24.207	POMPA	PUMP
168	07.083	MOTORIDUTTORE	GEAR MOTOR
169	13.033	CATENA	CHAIN
170	14.028	PIASTRA RIDUTTORE	GEARMOTOR HOLDER
171	22.012	CONDENSATORE 45 Mf	CONDENSATORE 45 Mf
172	24.051	CAVO 230 V	POWER CORD 230 V

SPARE PART LIST**MODEL:** KOBRA 400 COMBI **ARTICLE NUMBER:** 57.792 E/S 230V-50Hz. SUPPLY
LEVL 006 E/S (H.K./ BAHRAIN)**REF. DRAW:** 400-A / 400 F / 400 G / 400 E

POS.	CODICE	DESCRIZIONE	DESIGNATION
ITEM	PART		
	NUMBER		
027	12.006	PIGNONE Z=13	CHAIN WHEEL
115	05.007	LAMA	BLADE
118	05.009	LAMA	BLADE
157	24.207	POMPA	PUMP
168	07.083	MOTORIDUTTORE	GEAR MOTOR
169	13.033	CATENA	CHAIN
170	14.028	PIASTRA RIDUTTORE	GEARMOTOR HOLDER
171	22.012	CONDENSATORE 45 Mf	CONDENSATORE 45 Mf
172	24.054	CAVO 230 V	POWER CORD 230 V

SPARE PART LIST

MODEL: KOBRA 400 COMBI **ARTICLE NUMBER:** 57.721 E/S 240V-50Hz. SUPPLY
LEVL 006 E/S (UK. / MALESIA)

REF. DRAW: 400-A / 400 F / 400 G / 400 E

POS. CODICE		DESCRIZIONE	DESIGNATION
ITEM PART	NUMBER		
027	12.006	PIGNONE Z=13	CHAIN WHEEL
115	05.007	LAMA	BLADE
118	05.009	LAMA	BLADE
157	24.207	POMPA	PUMP
168	07.083	MOTORIDUTTORE	GEAR MOTOR
169	13.033	CATENA	CHAIN
170	14.028	PIASTRA RIDUTTORE	GEARMOTOR HOLDER
171	22.012	CONDENSATORE 45 Mf	CONDENSATORE 45 Mf
172	24.054	CAVO 230 V	POWER CORD 230 V

SPARE PART LIST

MODEL: KOBRA 400 COMBI **ARTICLE NUMBER:** 57.805 E/S 240V-50Hz. SUPPLY
LEVL 006 E/S (AUSTRALIA)

REF. DRAW: 400-A / 400 F / 400 G / 400 E

POS. CODICE		DESCRIZIONE	DESIGNATION
ITEM PART	NUMBER		
027	12.006	PIGNONE Z=13	CHAIN WHEEL
115	05.007	LAMA	BLADE
118	05.009	LAMA	BLADE
157	24.207	POMPA	PUMP
168	07.083	MOTORIDUTTORE	GEAR MOTOR
169	13.033	CATENA	CHAIN
170	14.028	PIASTRA RIDUTTORE	GEARMOTOR HOLDER
171	22.012	CONDENSATORE 45 Mf	CONDENSATORE 45 Mf
172	24.013	CAVO 230 V	POWER CORD 230 V

SPARE PART LIST

MODEL: KOBRA 400 COMBI **ARTICLE NUMBER:** 57.872 E/S 240V-50Hz. SUPPLY
LEVL 006 E/S (INDIA)
REF. DRAW: 400-A / 400 F / 400 G / 400 E

POS. CODICE		DESCRIZIONE	DESIGNATION
ITEM PART	NUMBER		
027	12.006	PIGNONE Z=13	CHAIN WHEEL
115	05.007	LAMA	BLADE
118	05.009	LAMA	BLADE
157	24.207	POMPA	PUMP
168	07.083	MOTORIDUTTORE	GEAR MOTOR
169	13.033	CATENA	CHAIN
170	14.028	PIASTRA RIDUTTORE	GEARMOTOR HOLDER
171	22.012	CONDENSATORE 45 Mf	CONDENSATORE 45 Mf
172	24.003	CAVO 230 V	POWER CORD 230 V

SPARE PART LIST

MODEL: KOBRA 400 COMBI **ARTICLE NUMBER:** 58.055 E/S 220V-60Hz. SUPPLY
LEVL 006 E/S (BZ. / ARABIA / PH.)
REF. DRAW: 400-A / 400 F / 400 G / 400 E

POS. CODICE		DESCRIZIONE	DESIGNATION
ITEM PART	NUMBER		
027	12.006	PIGNONE Z=13	CHAIN WHEEL
115	05.007	LAMA	BLADE
118	05.009	LAMA	BLADE
157	24.207	POMPA	PUMP
168	07.083	MOTORIDUTTORE	GEAR MOTOR
169	13.033	CATENA	CHAIN
170	14.028	PIASTRA RIDUTTORE	GEARMOTOR HOLDER
171	22.009	CONDENSATORE 50 Mf	CONDENSATORE 50 Mf
172	24.005	CAVO	POWER CORD

REVISIONE " 0" / REVISION " 0"

MODEL: KOBRA 400 COMBI LEVEL 006
REF. DRAWING: 400 B / 400 C / 400 L / 400 M
EFFECTIVE PRODUCTION: DATE: 12.09.08
**UNITS WITH SERIAL
NUMBER UP TO :** Serial number 230V : 1000
Serial number 115V : 1000/0408
Serial number 110V : 1000
Serial number 100V : 1000

SPARE PART LIST

POS. ITEM	CODICE PART NUMBER	DESCRIZIONE	DESIGNATION
048	27.110	SCHEDA ELETTRONICA	PC BOARD
155	51.579	DIFFUSORE OLIO	OIL WICK
160	24.206	FLUSSOSTATO	OIL FLOW SWITCH
165	51.578	RACCORDO	METAL CAP

REVISIONE " A " / REVISION " A "

MODEL: KOBRA 400 COMBI LEVEL 006
REF. DRAWING: 400 B / 400 C / 400 N / 400 O
EFFECTIVE PRODUCTION: DATE: 12.09.08
UNITS FROM SERIAL
NUMBER AND AFTER : Serial number 230V : 1000
Serial number 115V : 1001
Serial number 110V : 1000
Serial number 100V : 1000

SPARE PART LIST

POS. ITEM	CODICE PART NUMBER	DESCRIZIONE	DESIGNATION
048	27.110/A	SCHEDA ELETTRONICA	PC BOARD
155	51.576	DIFFUSORE OLIO	OIL WICK
165	51.585	FASCETTA	PLASTIC CLAMP
160	24.209	PRESSOSTATO	OIL PRESSURE SWITCH
177	51.582	TUBO	TUBE
178	51.564	RACCORDO A T	T-JUNCTION

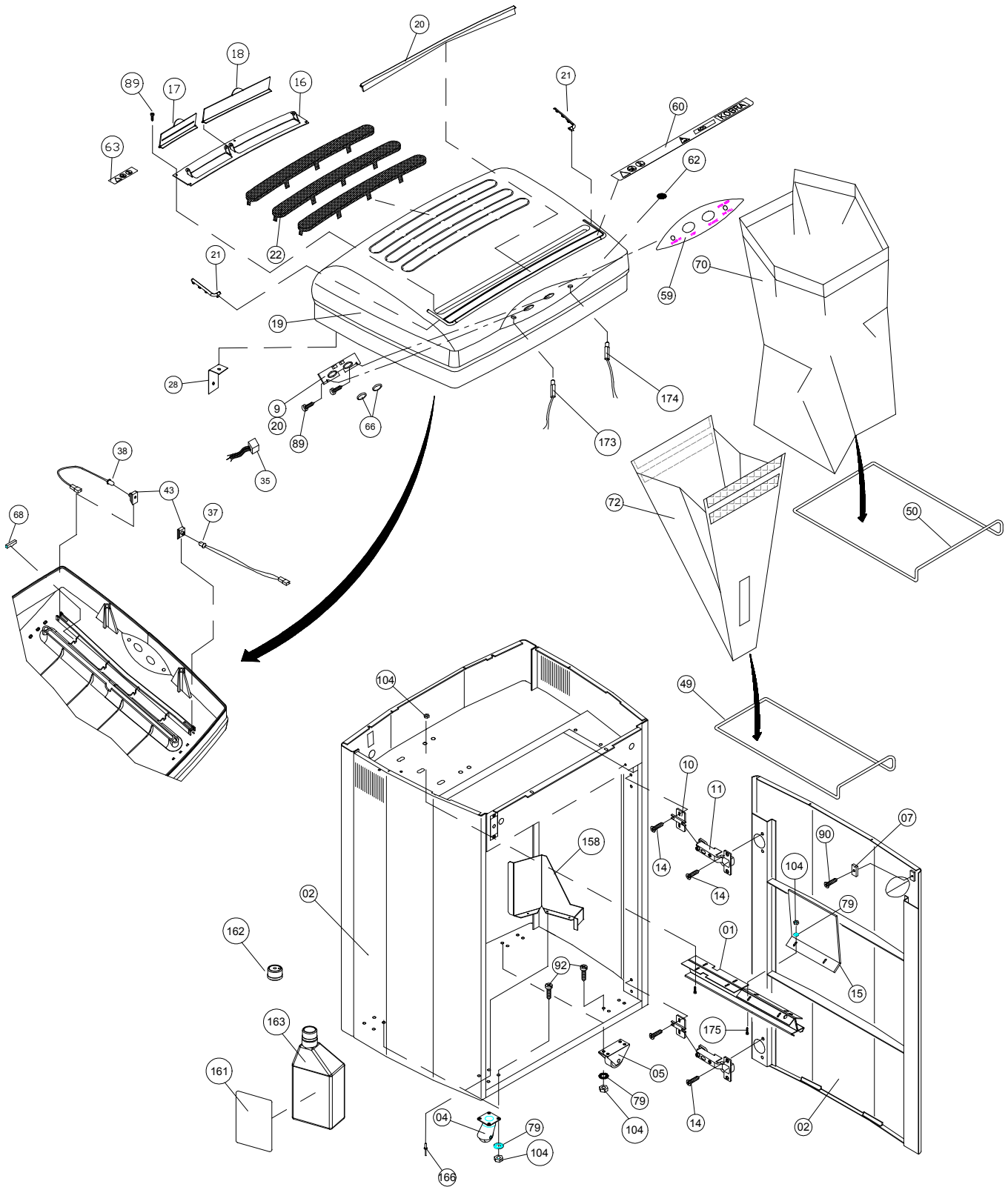
REVISIONE " B " / REVISION " B "

MODEL: KOBRA 400 COMBI LEVEL 006
REF. DRAWING: 400 D LEROY
EFFECTIVE PRODUCTION: DATE: 07/06/2010
**UNITS FROM SERIAL
NUMBER AND AFTER :**
Serial number 115V :
Serial number 110V :

SPARE PART LIST

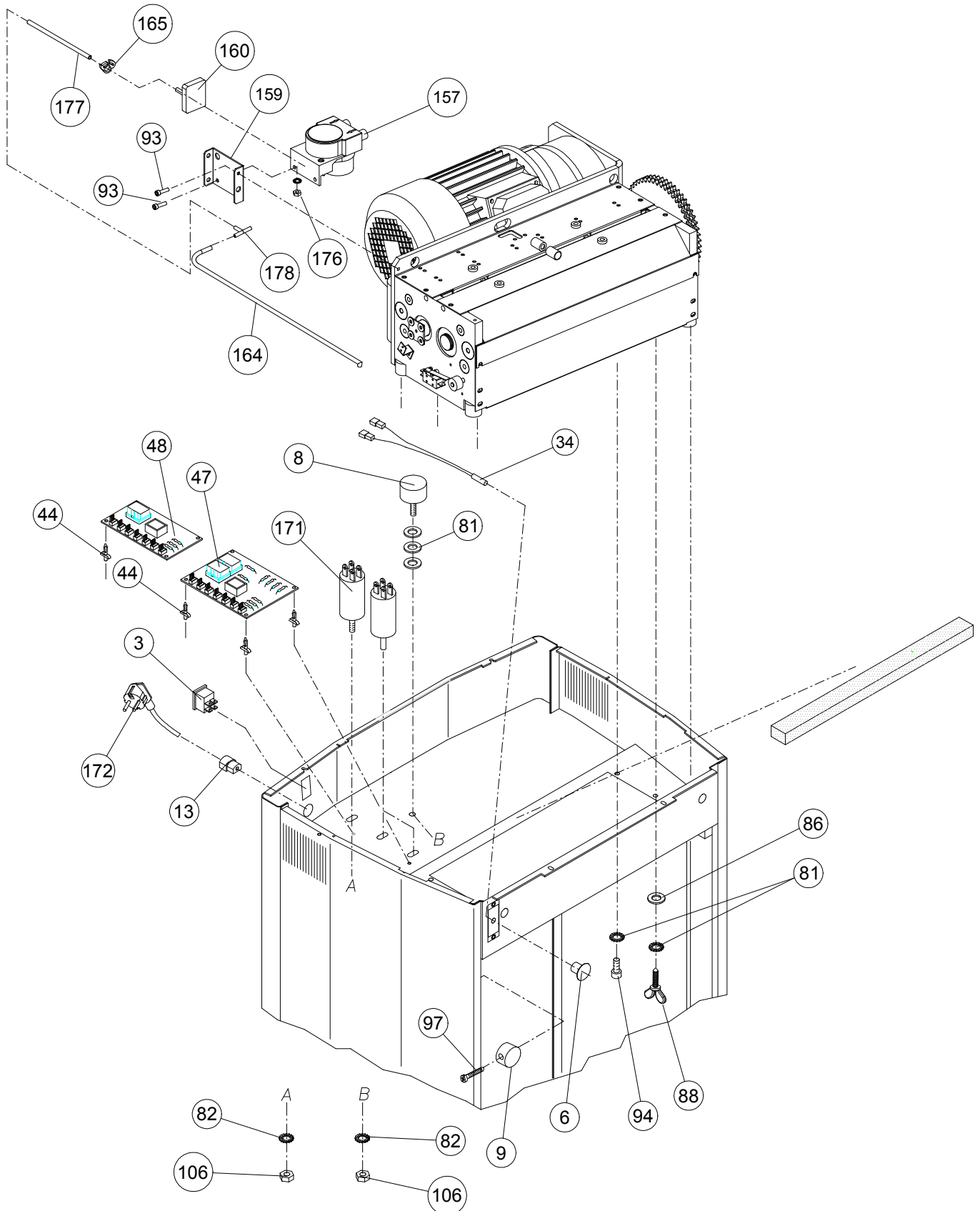
POS. ITEM	CODICE PART NUMBER	DESCRIZIONE	DESIGNATION
027	12.011	PIGNONE Z=16	CHAIN WHEEL
169	13.041	CATENA	CHAIN

400 COMBI



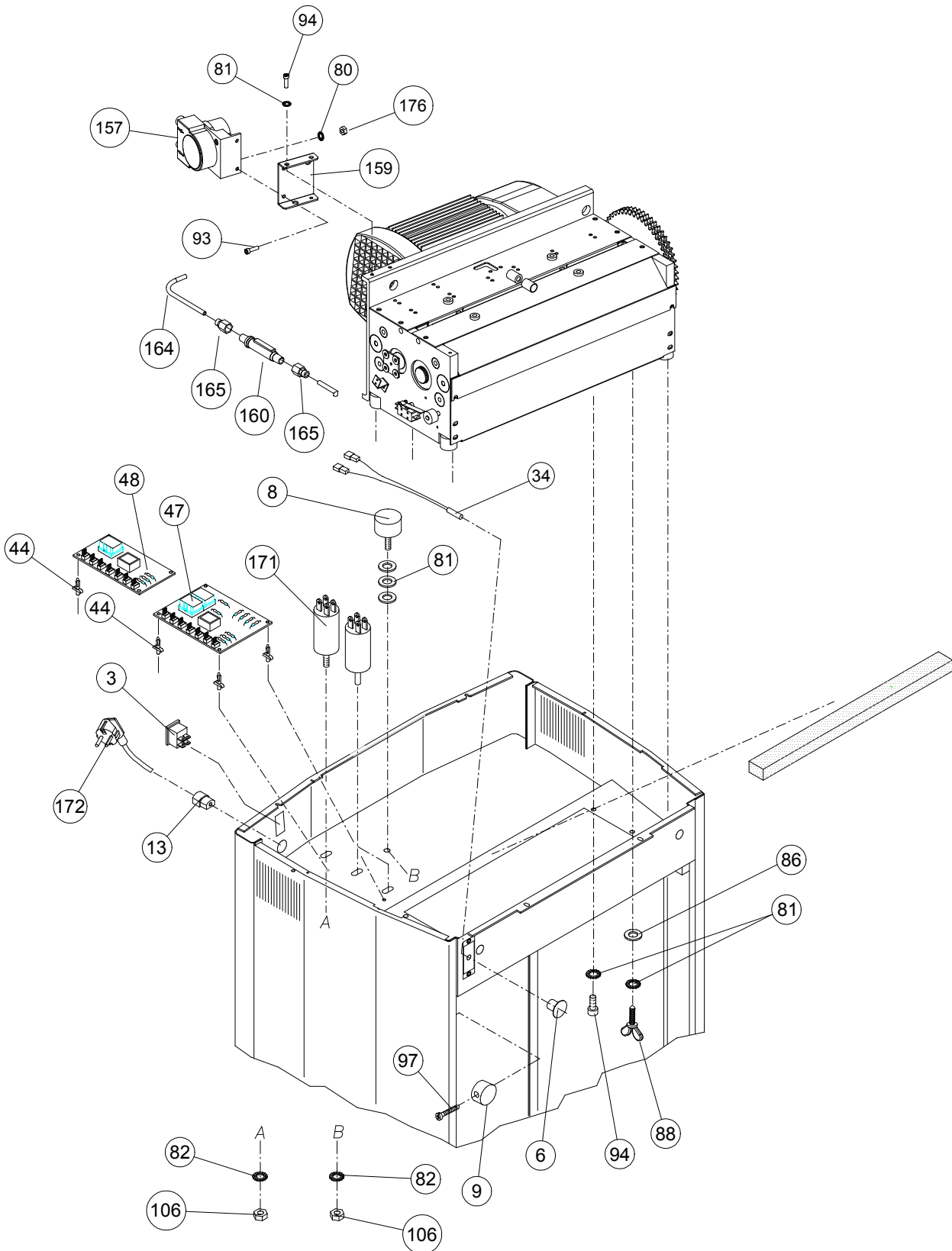
Disegno /Drawing : 400-A

400 COMBI REV.A



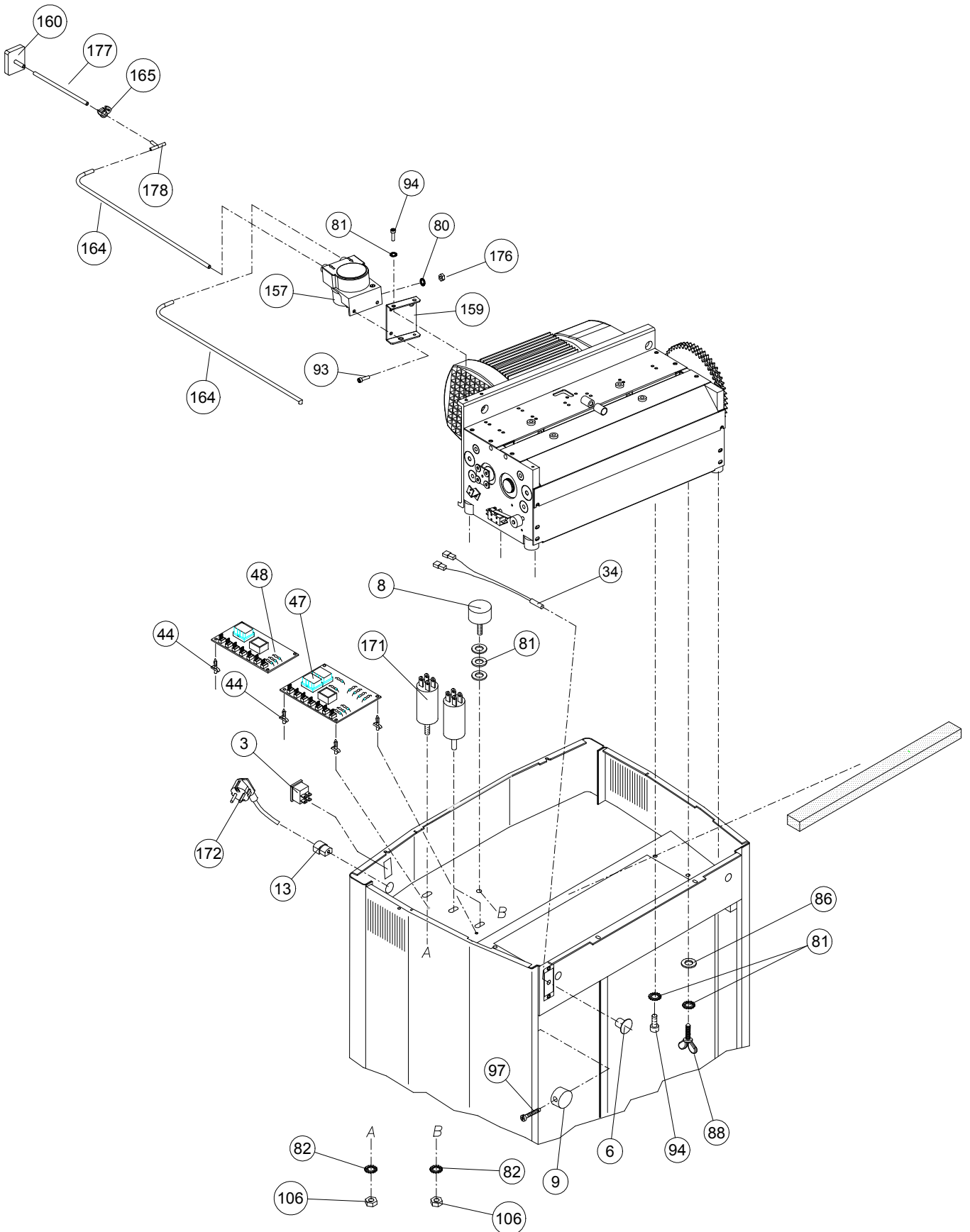
Disegno /Drawing : 400-B-OEM-REV.--

400 COMBI REV.--



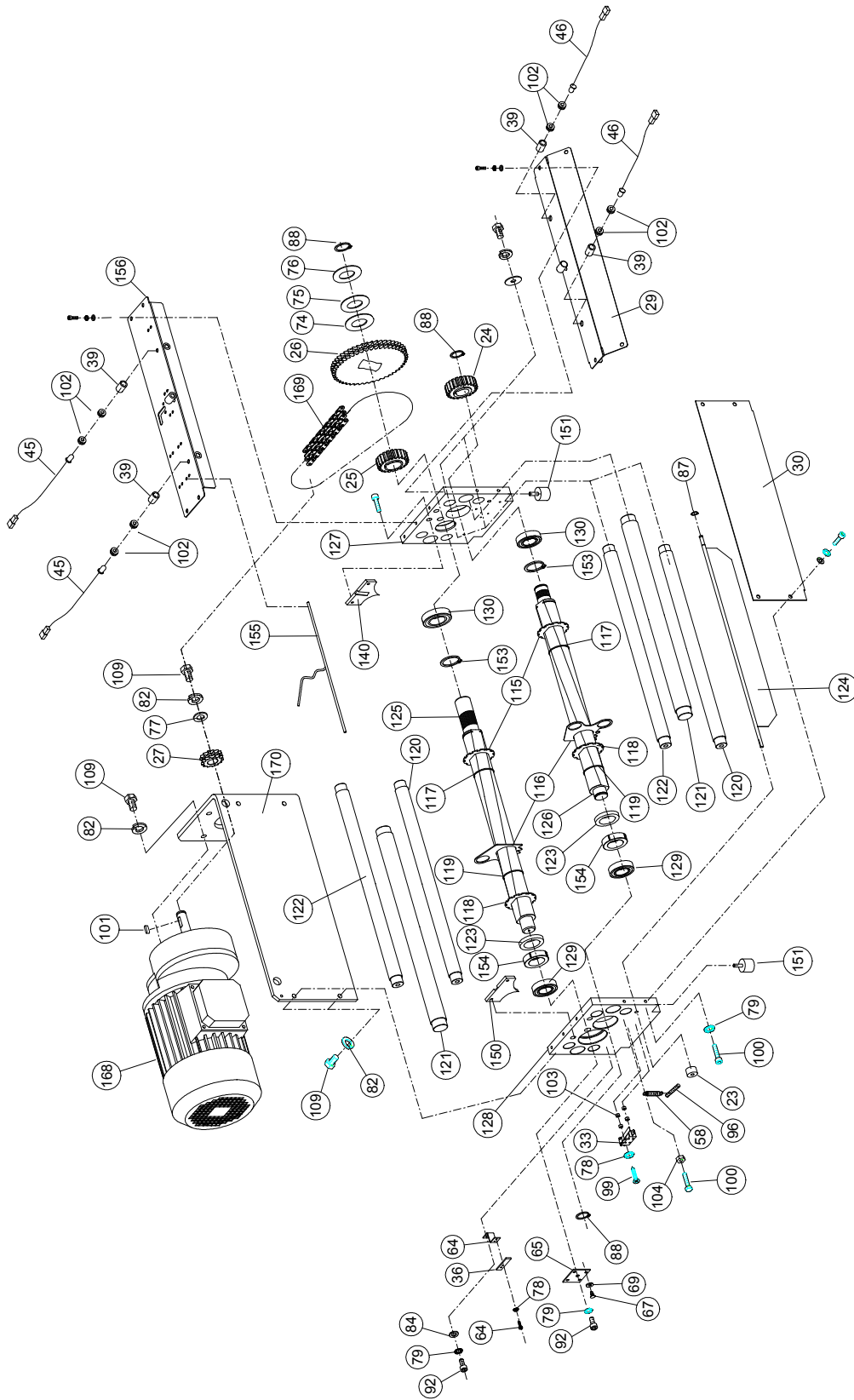
Disegno /Drawing : 400-C-LEROY-REV.--

400 COMBI REV.A



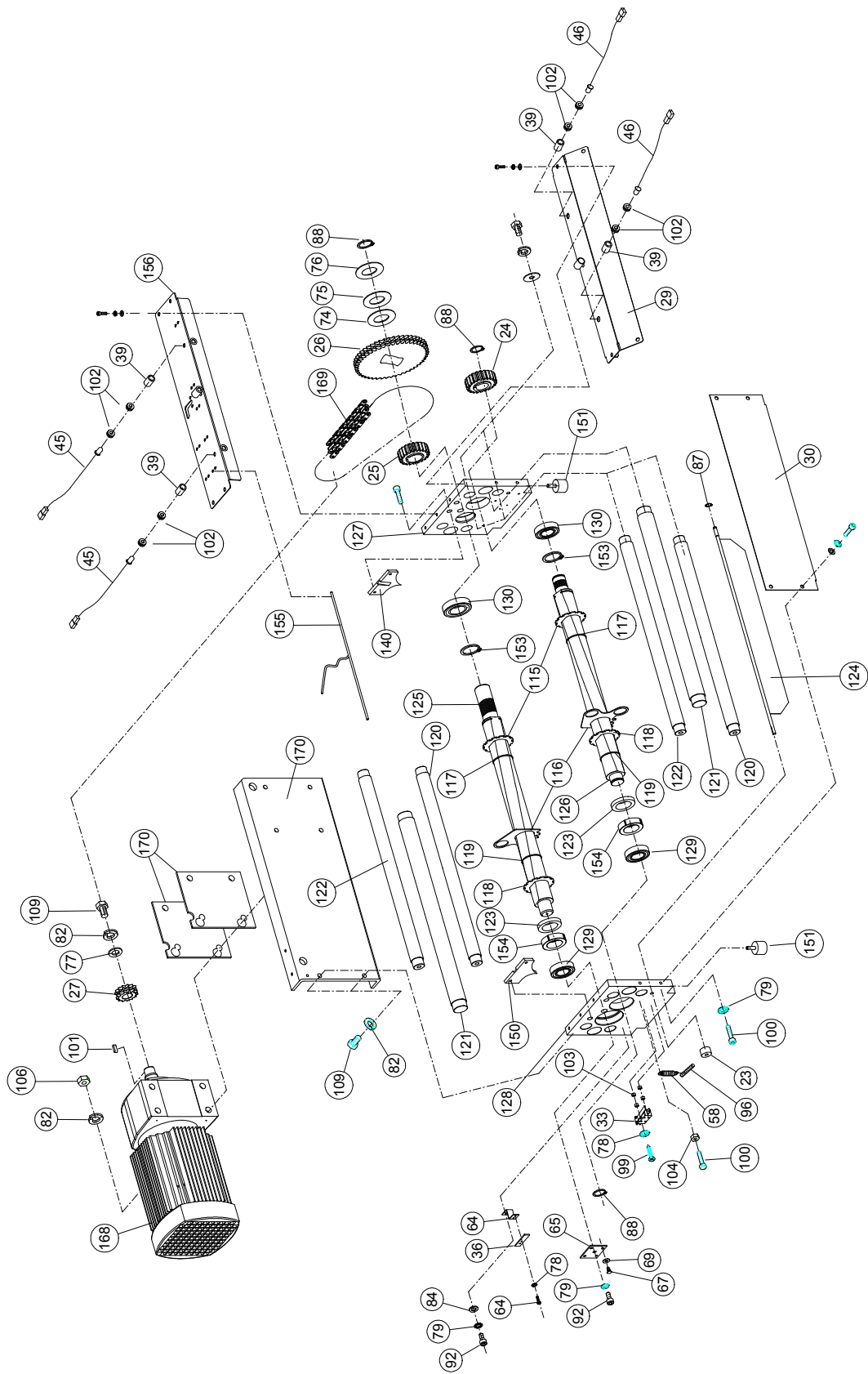
Disegno /Drawing : 400-C-LEROY-REV.A

400 COMBI LEVEL 005



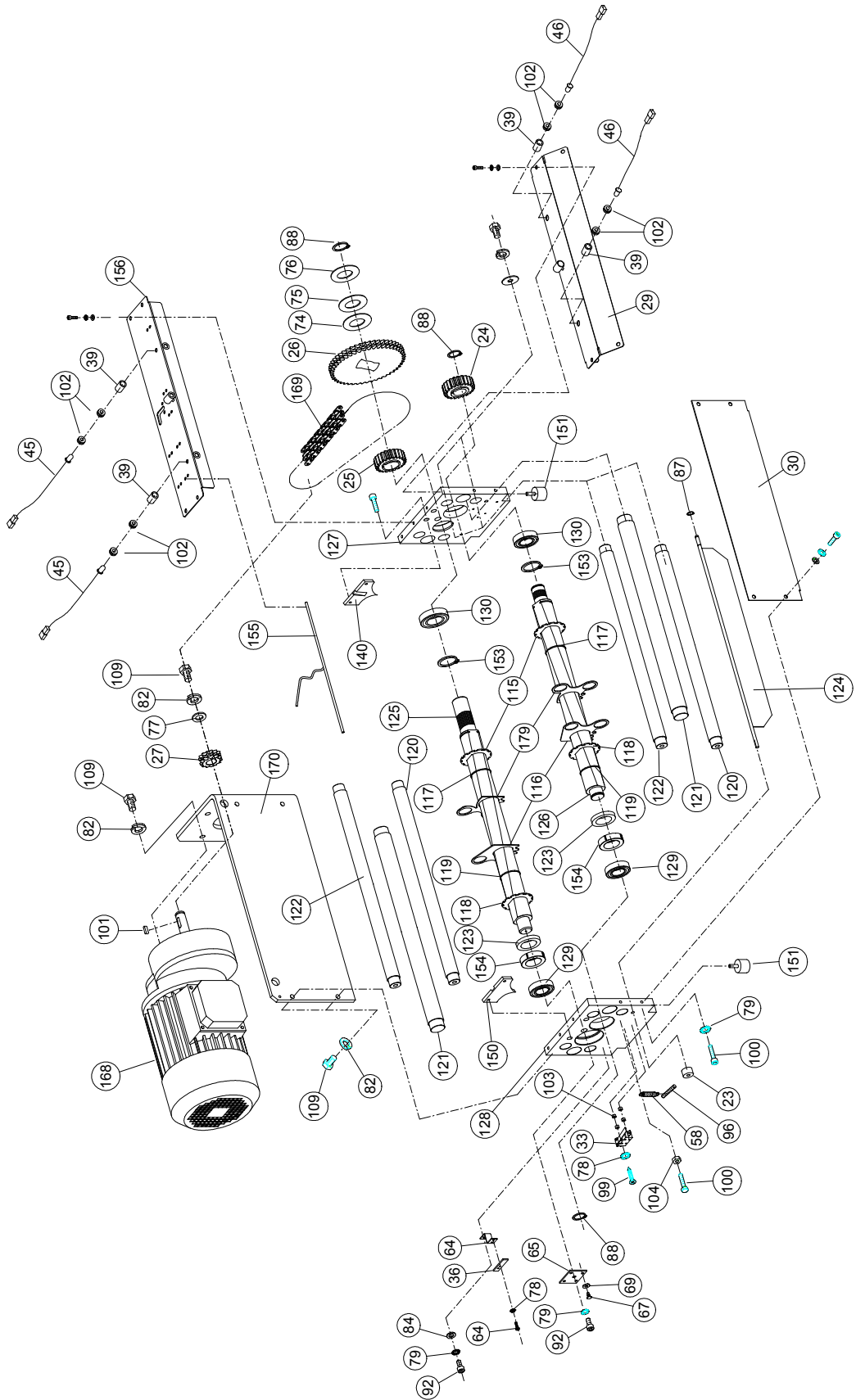
Disegno /Drawing : 400-D-OEM

400 COMBI LEVEL 005



Disegno /Drawing : 400-D-LEROY

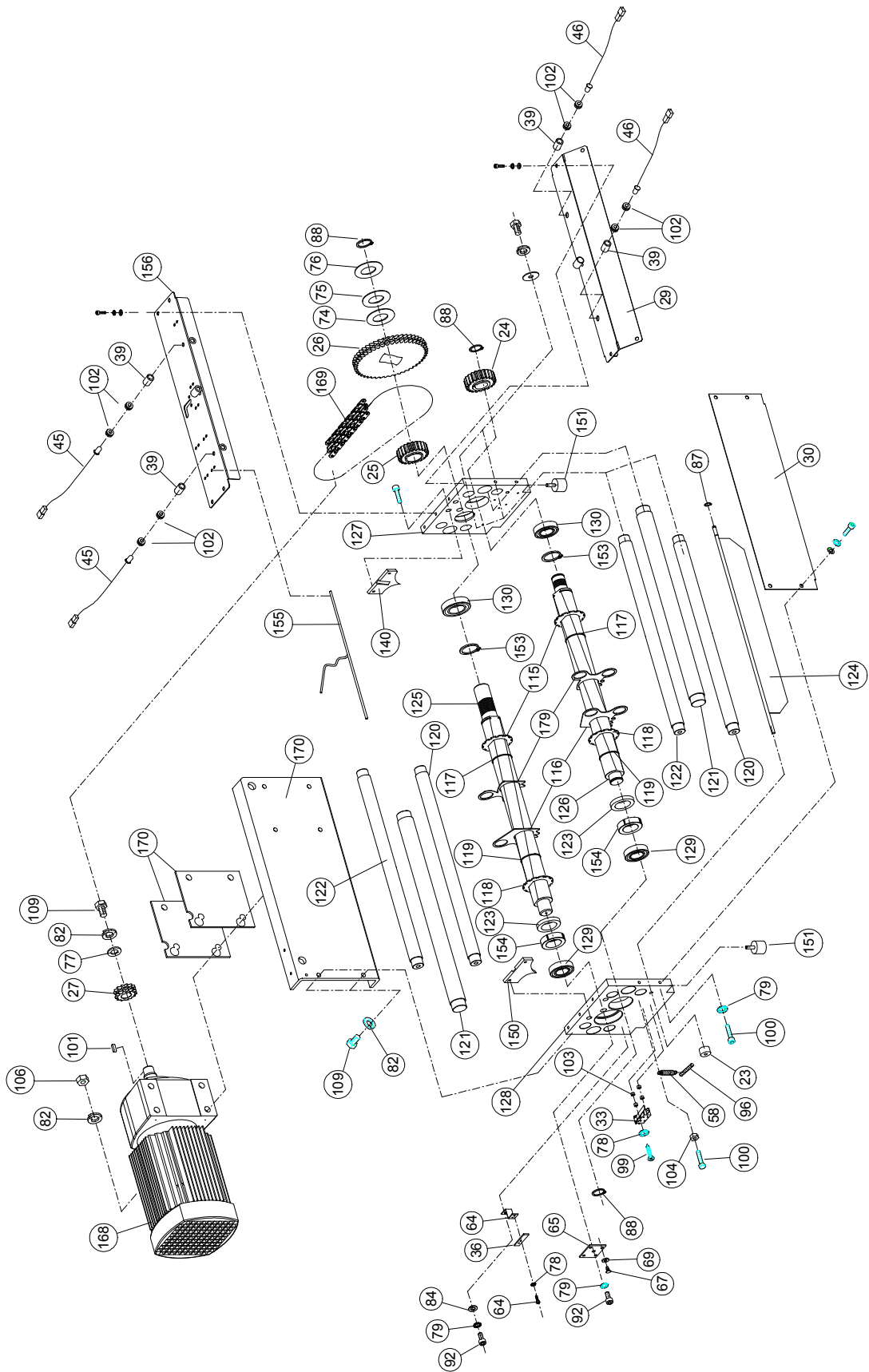
400 COMBI LEVEL 006



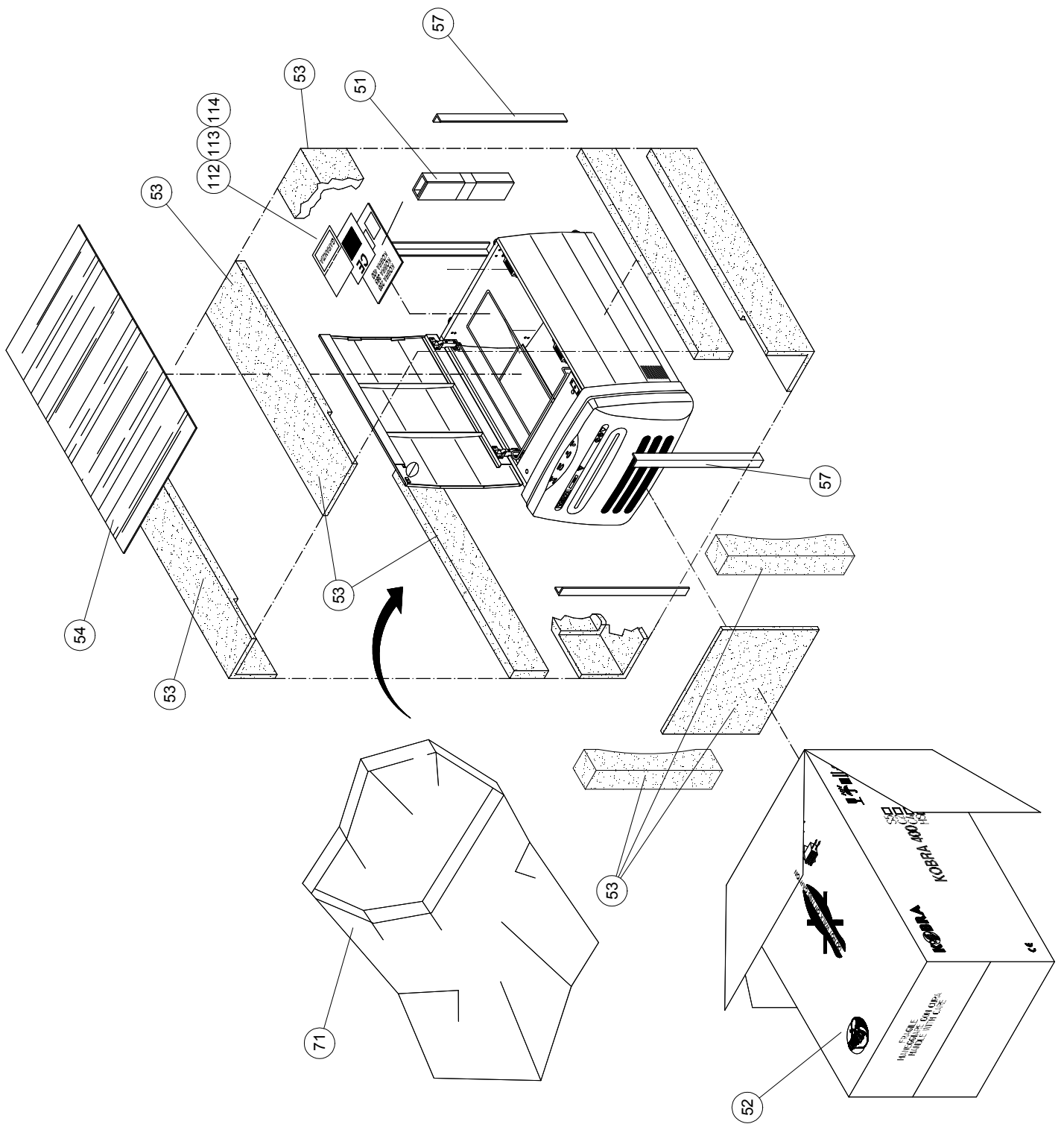
Disegno /Drawing : 400-D-OEM

DI-109/08/20.02.12

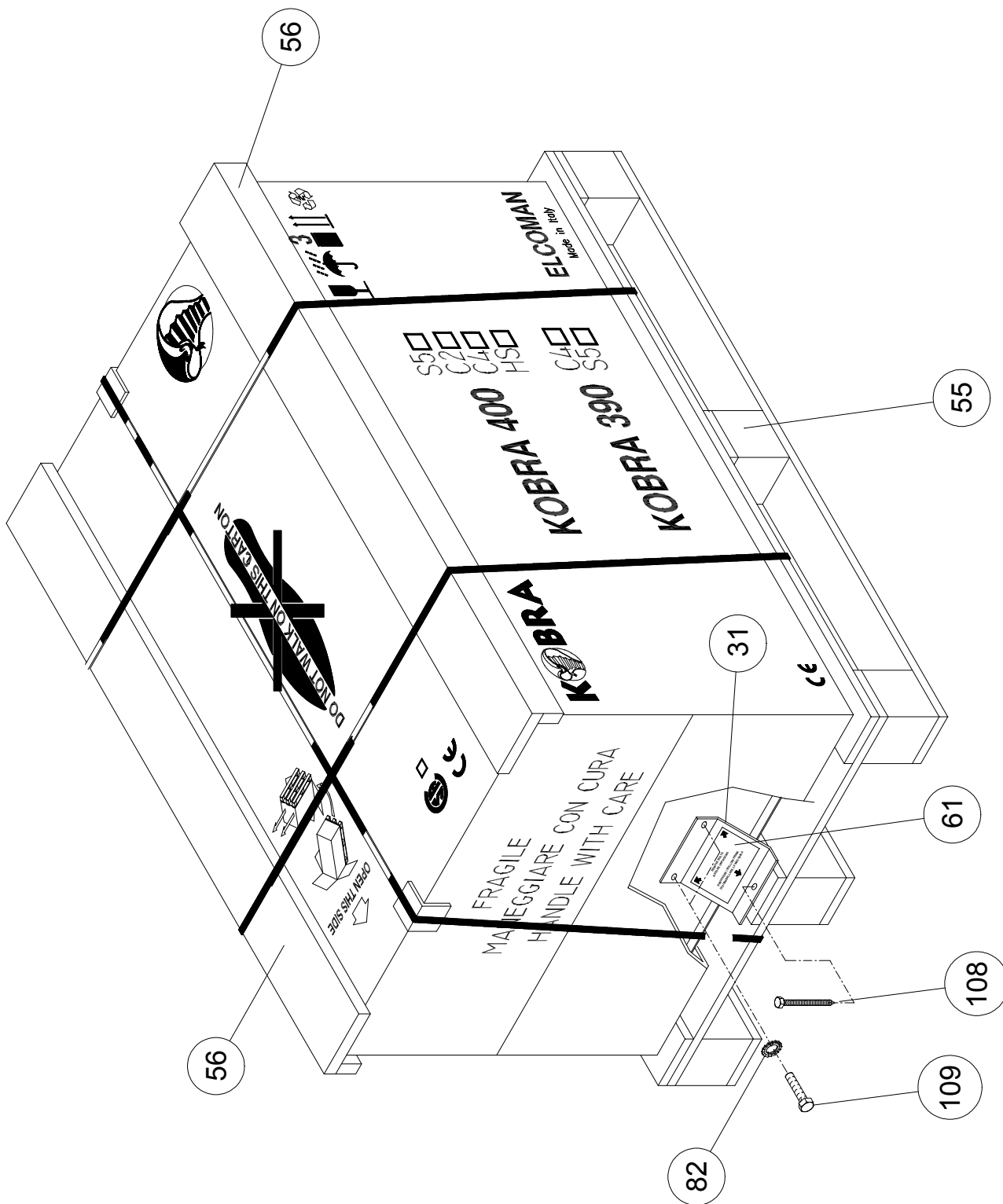
400 COMBI LEVEL 006



Disegno /Drawing : 400-D-LEROY

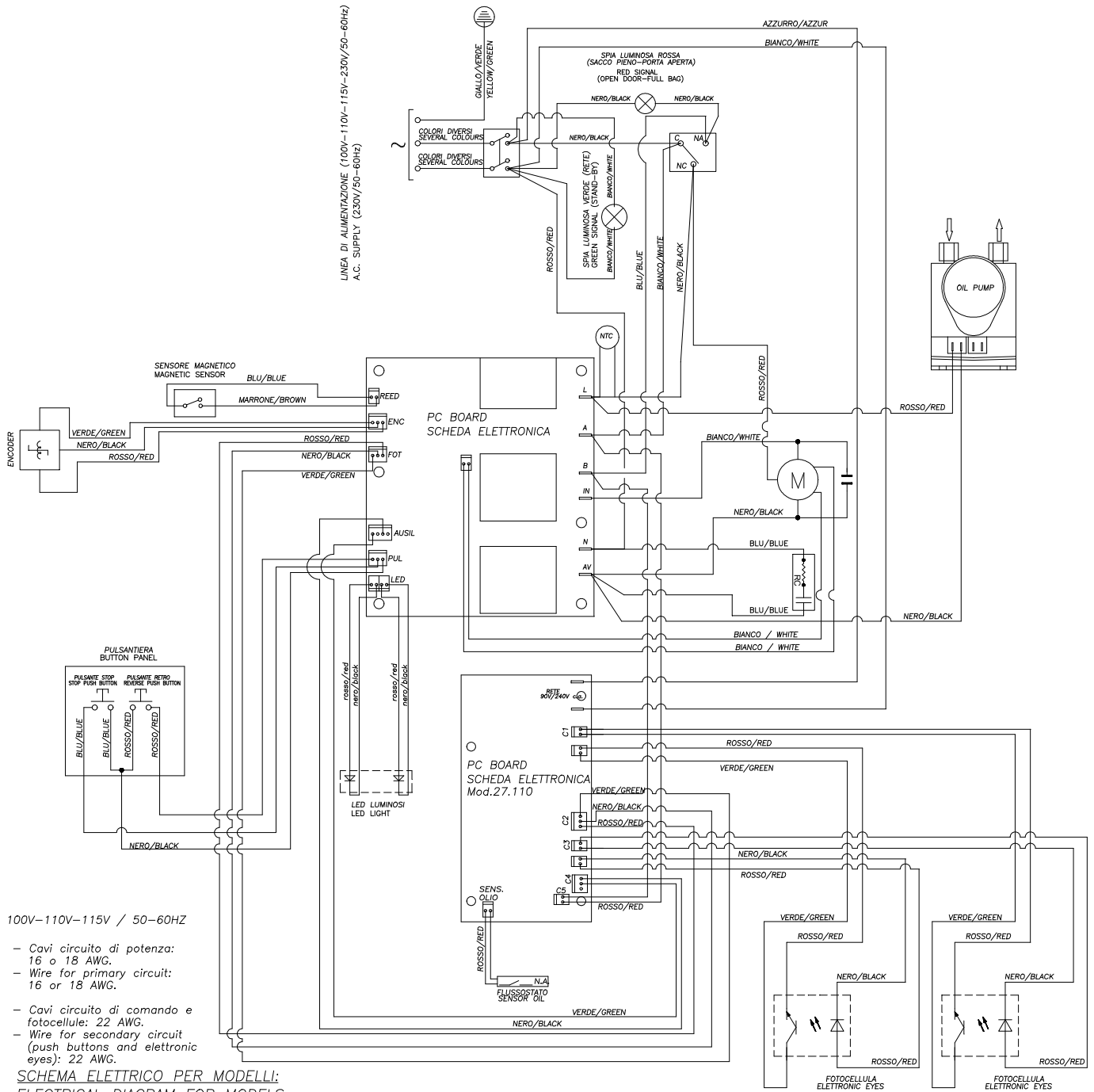


Disegno /Drawing : 400-D



Disegno /Drawing : 400-D

400 COMBI REV.--



Disegno /Drawing : 400-D-LEROY

