

Jogger Serial # _____

Date Purchased _____

Dealer _____

Phone _____

Contact _____

Martin Yale Industries Inc. is a corporation of 55 years, servicing the graphic arts industry with such quality products as Paper Folders (air feed and friction feed), Cutters, Perforators, Stackwagons, Binder Trucks, Paper Drills, Collators, & Padding Presses. We provide the office equipment industry with such quality products as Letter Openers, Bursters, Decollators, Collators, Checksigners, Compusigners, Staplers, Trimming Boards, Cutters, and Drills, as well as the products previously listed. Contact us or your dealer for a catalog.

Martin Yale Industries, Inc. reserves the right to modify the specifications or design without prior notification and without incurring the obligation to change machines already sold. All rights reserved. This book, or any parts thereof, may not be reproduced, stored in a retrieval system, or transmitted in any form or by any means without the prior permission of the publishers.



Martin Yale
INDUSTRIES, INC.

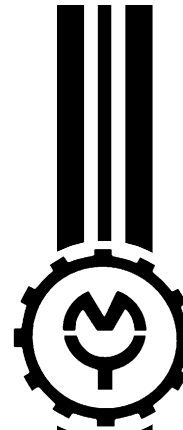
251 Wedcor Ave. • Wabash, IN 46992

Phone (260) 563-0641 • Fax (260) 563-4575

Website: www.martinyale.com • Email: info@martinyale.com

Part No. M-S027206

Rev. 1 5/05/03



**OPERATING INSTRUCTION
MARTIN YALE JOGGER
MODELS P-M400000 & P-M400220**

“The 4 RUNNER of QUALITY Joggers”

Designed and Manufactured in America By

Martin Yale

Martin Yale
INDUSTRIES, INC.

251 Wedcor Ave. • Wabash, IN 46992

Phone (260) 563-0641 • Fax (260) 563-4575

Website: www.martinyale.com • Email: info@martinyale.com

INTRODUCTION:

Thank you for selecting the Martin Yale Model 400 Jogger. The Model 400 Jogger has been developed for ease of operation and maintenance, however, we recommend that you familiarize yourself with the machine by carefully reading these instructions.

WARNING: THIS MACHINE CONTAINS MOVING PARTS THAT CAN CATCH HAIR OR LOOSE CLOTHING AND PINCH FINGERS. DURING OPERATION AND MAINTENANCE, KEEP HANDS, HAIR, AND LOOSE CLOTHING CLEAR OF MOVING PARTS. SERVICE OR DISASSEMBLY SHOULD BE DONE WITH POWER CORD DISCONNECTED.

INSTALLATION:

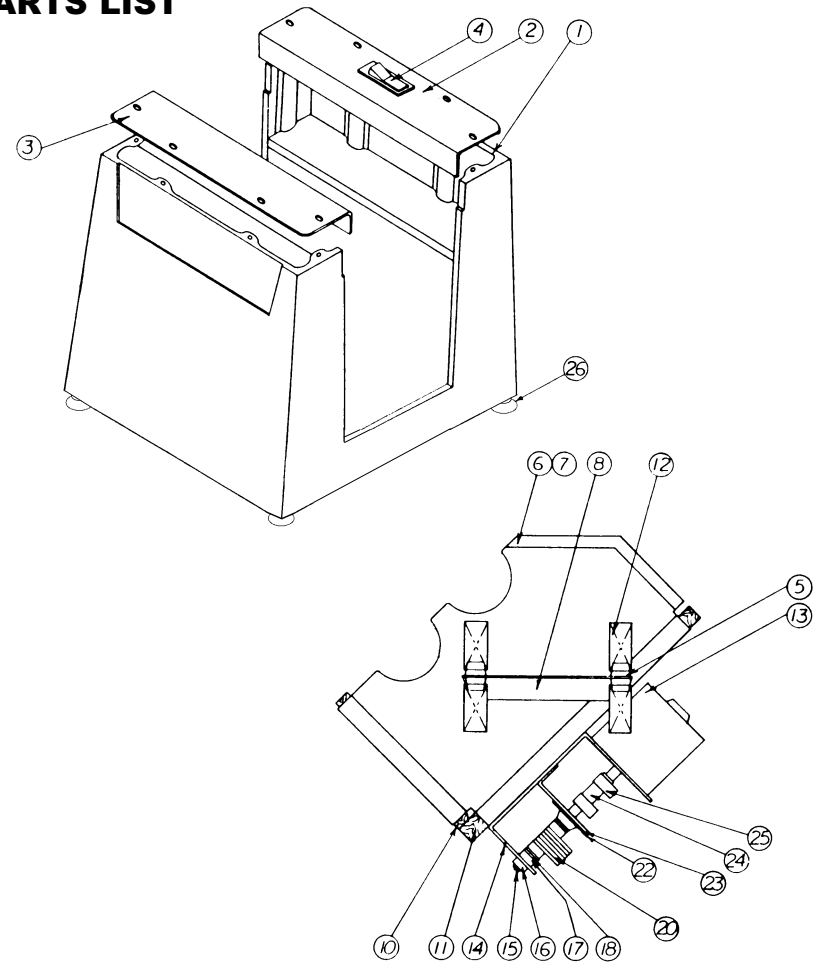
Remove jogger from carton. Remove 2 bolts at bottom which secure packing material to jogger.

Plug unit into any 115V 60 Hz/A.C. outlet. Turn Switch "ON". (A light will indicate "ON" position.) Load paper.

MAINTENANCE:

Lubricate bearings with light oil every 6 mos. Occasionally, if necessary, remove any debris from bearings with a brush or an air jet stream. See parts list for bearing locations.

PARTS LIST



KEY	DESCRIPTION	PART NO.	QTY	KEY	DESCRIPTION	PART NO.	QTY
1	Base	M-O400001	1	15	Counter Shaft	M-O400005	1
2	Top Cover-R.H.	W-O400002	1	16	Bearing-Flange	M-S013010	1
3	Top Cover-L.H.	W-O400003	1	17	Set Collar	M-S037302	2
4	Switch	M-S033051	1	18	Washer-Nylon	M-S019024	2
5	Bumpers	M-S030045	12	20	Counterweights	W-O400004	12
6	Side Panel-R.H.	W-O400008	1	22	Bearing	M-S013047	1
7	Side Panel-L.H.	W-O400009	1	23	Motor Base Bracket	W-O400013	1
8	Side Bracket-R.H.	W-O400010	2	24	Motor Coupling	W-O400012	1
10	Wood Tray-Bottom	M-O400006	1	25	Clamps	M-S037314	2
11	Wood Tray-Back	M-O400007	1	26	Suction Cup	M-S030048	4
12	Springs	M-S031074	8				
13	Motor (110V)	M-S021030	1	Not Shown			
13	Motor (220VAC)	M-S021019	1		115V Line Cord	M-S037020	1
14	Motor Base	W-O400014	1		Europ. Cord Set	M-S037286	1