

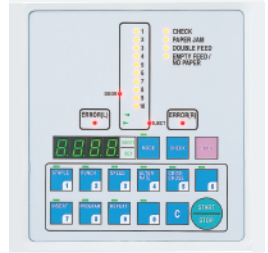
→ FC 10

AUTOMATIC 10-BIN FRICTION COLLATOR · collates variety of paper stocks and weights at speeds up to 3,600 sets per hour* · 275 sheet bin capacity* · touch-button control panel with LED 4 digit counter simplifies set-up and operation · programming modes include preset batch, insertion, and an alternate bin mode for continuous production · adjustable stacking table for straight or criss-cross stacking · self-centering feed guides eliminate the need to reposition on-line bookletmakers for different size stock · adjustable feed and separator pressures on each bin · "bin empty" sensor · extra large, detachable feed trays · options include a base with casters (shown), twin tower transport unit, high capacity stacker, and corner stapler

Dimensions (D x W x H): 21 x 28 x 41 ¼ inches (34 W, 63 H with base), Shipping weight: 200 lbs. (250 with base)



CONTROL PANEL



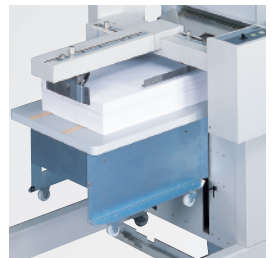
Programming and operation is controlled from an easy-to-use touch-button control panel.

CRISS-CROSS STACKING



The criss-cross stacking feature allows easy set separation.

HIGH CAPACITY STACKER



The high capacity stacker can stack up to 3,200 collated sheets (straight or offset).

→ FC 10

Number of bins	10
Bin capacity	275 sheets*
Paper size	3 ½" x 5 ⅞" to 12 ⅞" x 18 ½"
Paper weight	20 to 100 lbs.
Speed	3,600 sets/hr*
Power supply	110 V, 60 Hz

* may vary due to variations in paper and power supply

Dealer:

MBM
CORPORATION

3134 Industry Drive
North Charleston, South Carolina 29418
800-223-2508, fax: 843-552-2974
www.mbmcorp.com

IDEAL.MBM
CORPORATION

1 Regan Road, unit 12
Brampton, Ontario L7A 1B8
800-387-2528, fax: 905-840-1114
www.ideal-mbm.com

ProSource Packaging, Inc.

14911 Stuebner Airline Rd. Ste. A Phone: (281) 453-8801
Houston, TX 77069 www.machine-solution.com

All technical data is approximate and subject to change. © MBM Corporation, 10/2006.